



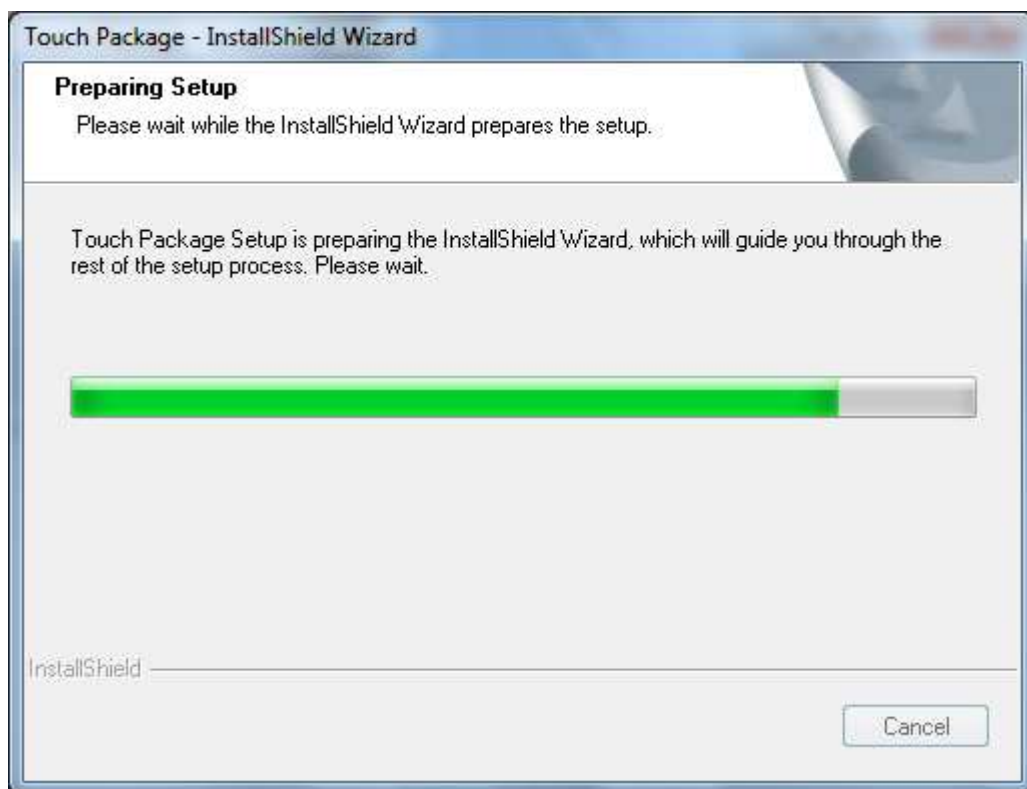
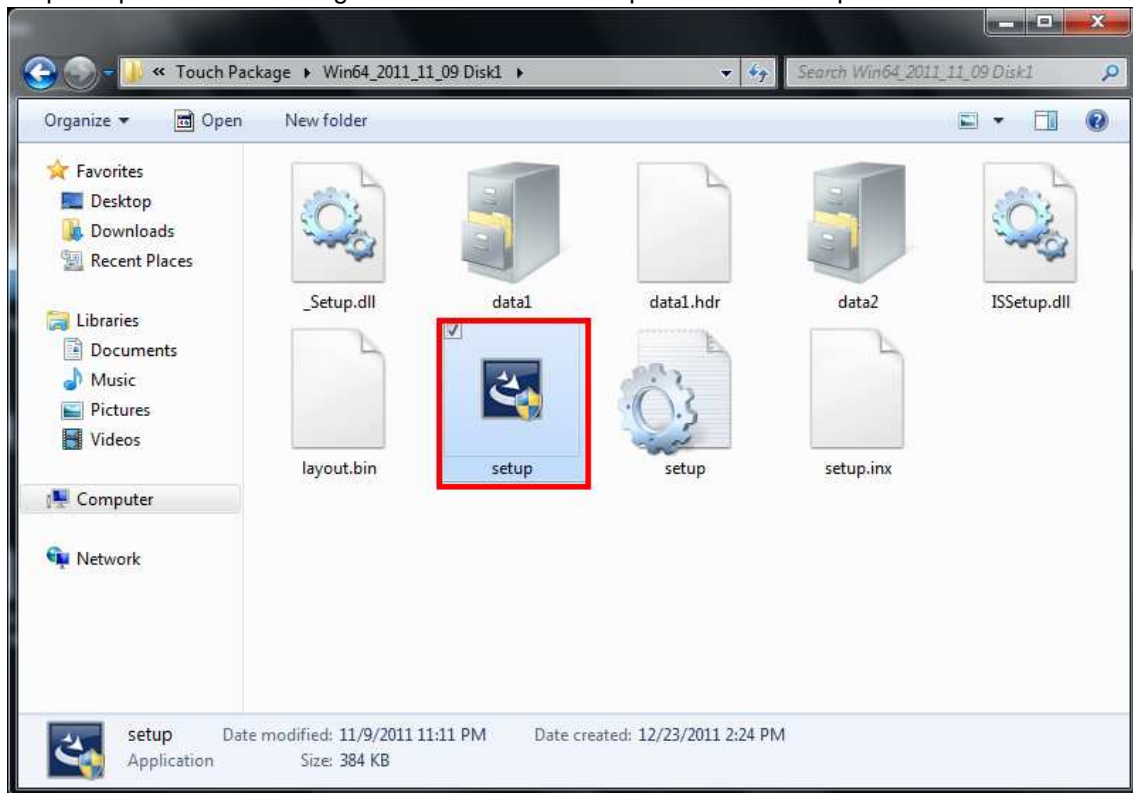
Touch Package User Guide

Table of Contents

Touch Driver Installation Guide.....	2
Touch Driver User Guide	
General	9
Mouse	10
Report Mode	10
Right Click Settings.....	10
Double Click Settings	11
Touch Panel Rotation	11
Sound.....	11
Multimonitor.....	12
Advance	12
Linearization Type	13
HID Mode.....	13
System Tool.....	13
Multi-Monitor Set-Up for Windows 32-bit	
Detect Display	14
Multimonitor (Digitizer HID Mode)	15
Multimonitor (Mouse HID Mode)	18
Start Tablet PC Input Panel	20
Multi-Monitor Set-Up for Windows 64-bit	
Remarks Before Installation	23
Detect Display	27
Multimonitor (Digitizer HID Mode)	29
Start Tablet PC Input Panel	32

Touch Driver Installation Guide

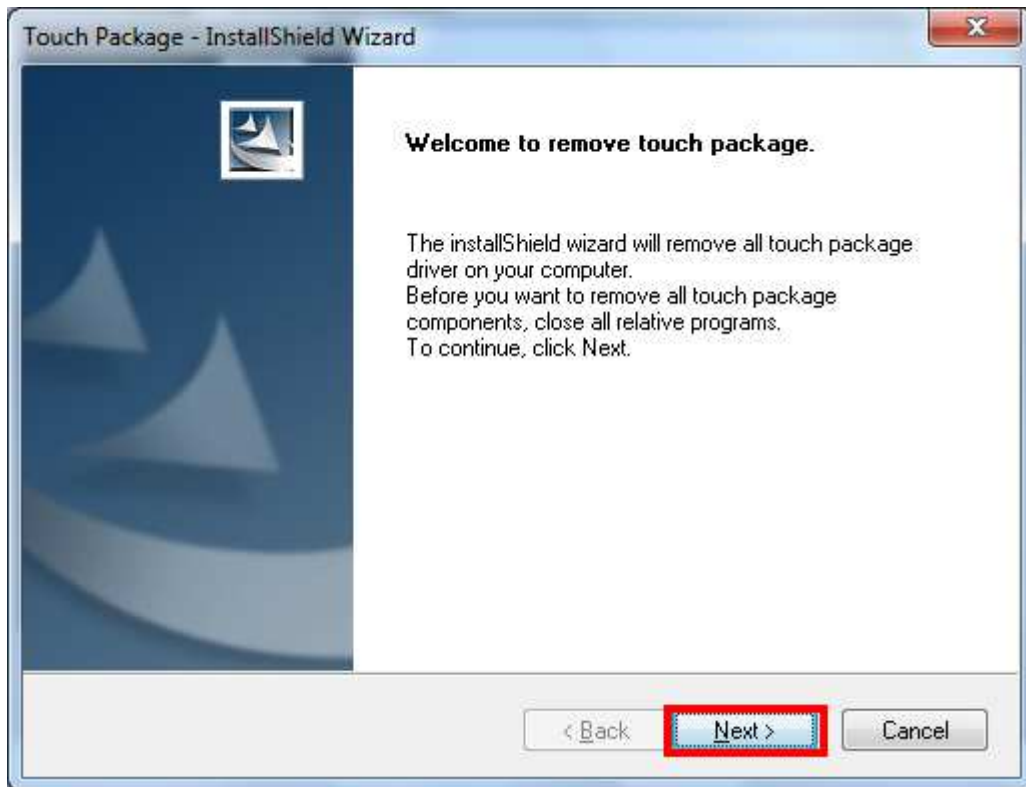
Step 1: Open "Touch Package" folder and click "Setup.exe" to run setup.



AIM TOUCH USER GUIDE.

Step 2: Confirm software installation.

Click "NEXT" to continue setup; Click "Cancel" to exit setup.

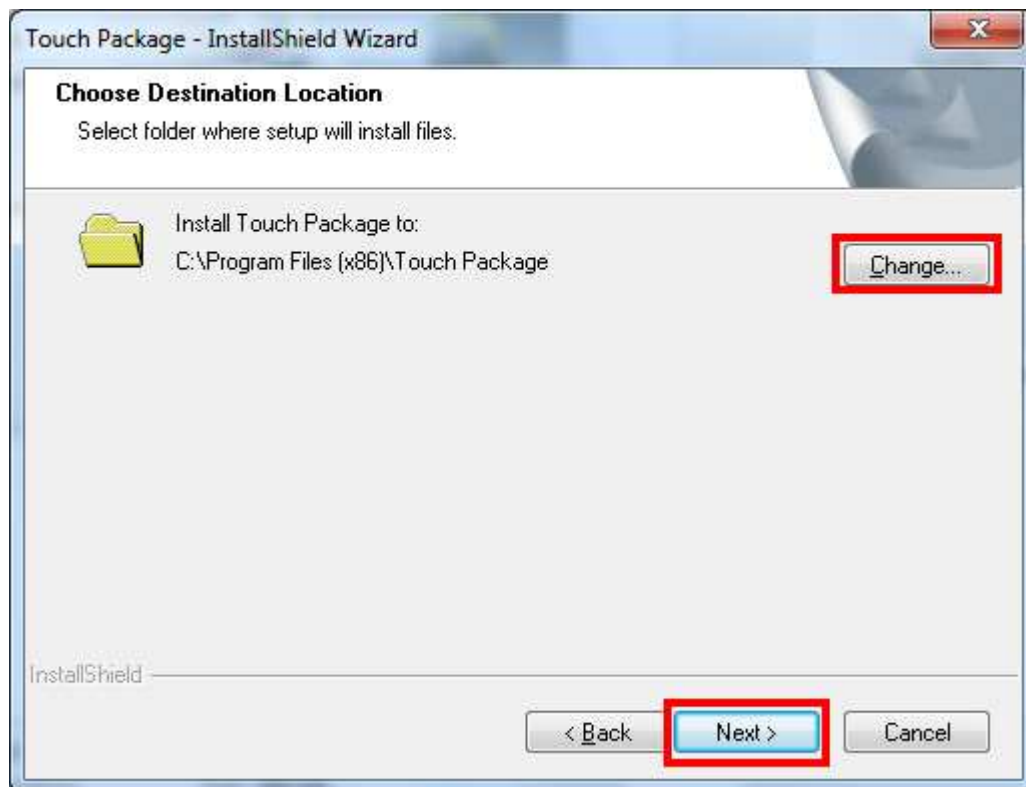


Step 3: Confirm install destination.

Change...→Change install file path.

BACK→return to previous menu; NEXT→continue installation;

Cancel→exit setup.

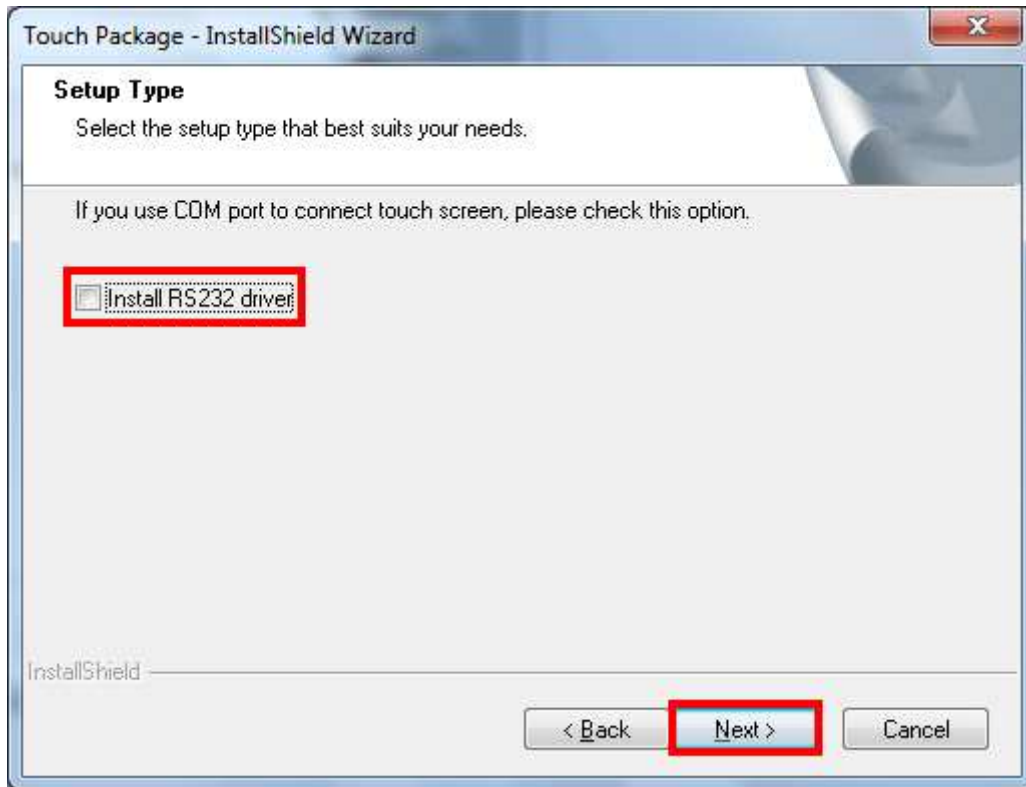


Step 4: Confirm COM/Serial port setup; for RS232 interface please select this option.

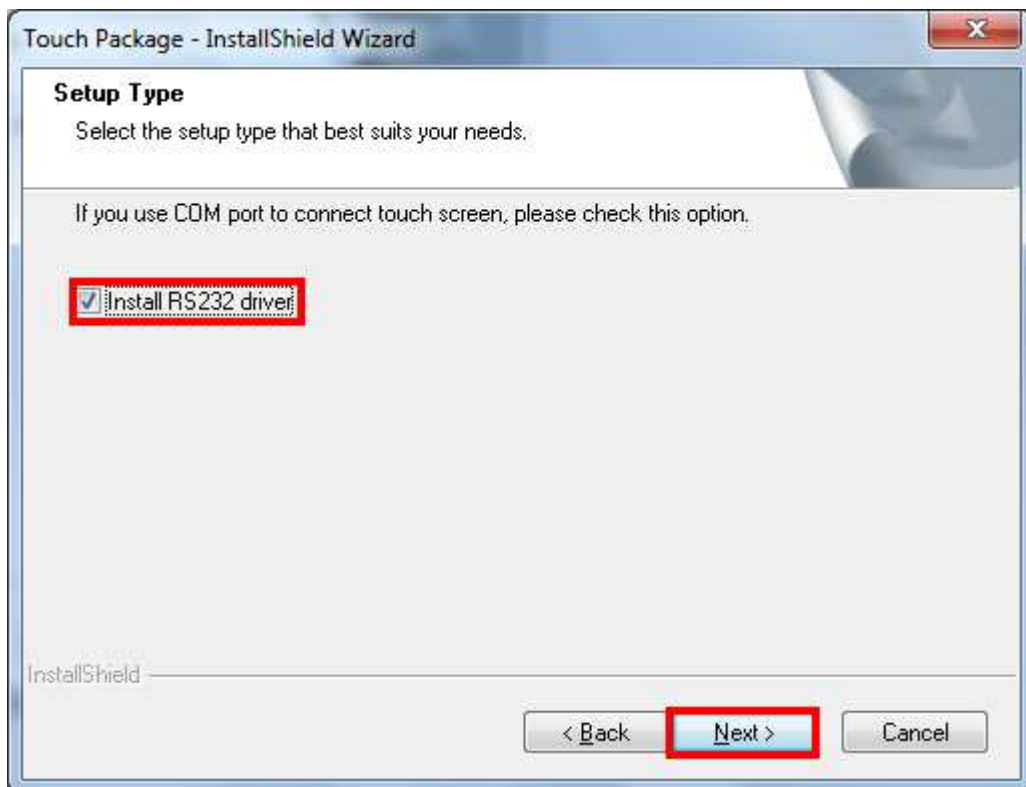
Install RS232 drive→Select to install RS232.

BACK→return to previous menu; NEXT→continue installation;

Cancel→exit setup.



(↑RS232 driver **not** installed)
(↓RS232 driver installed)



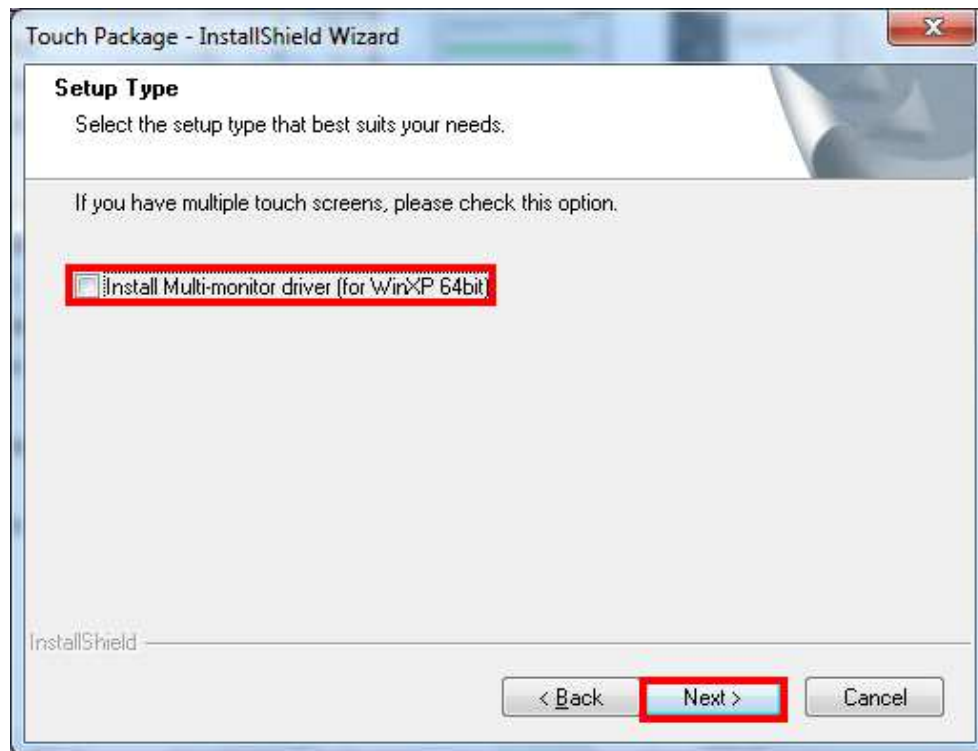
AIM TOUCH USER GUIDE.

Step 5: Confirm Multi-monitor setup(for multiple touch screens); for multi-monitor function please select this option.

Multi-monitor drive→Select to install Multi-monitor ◦

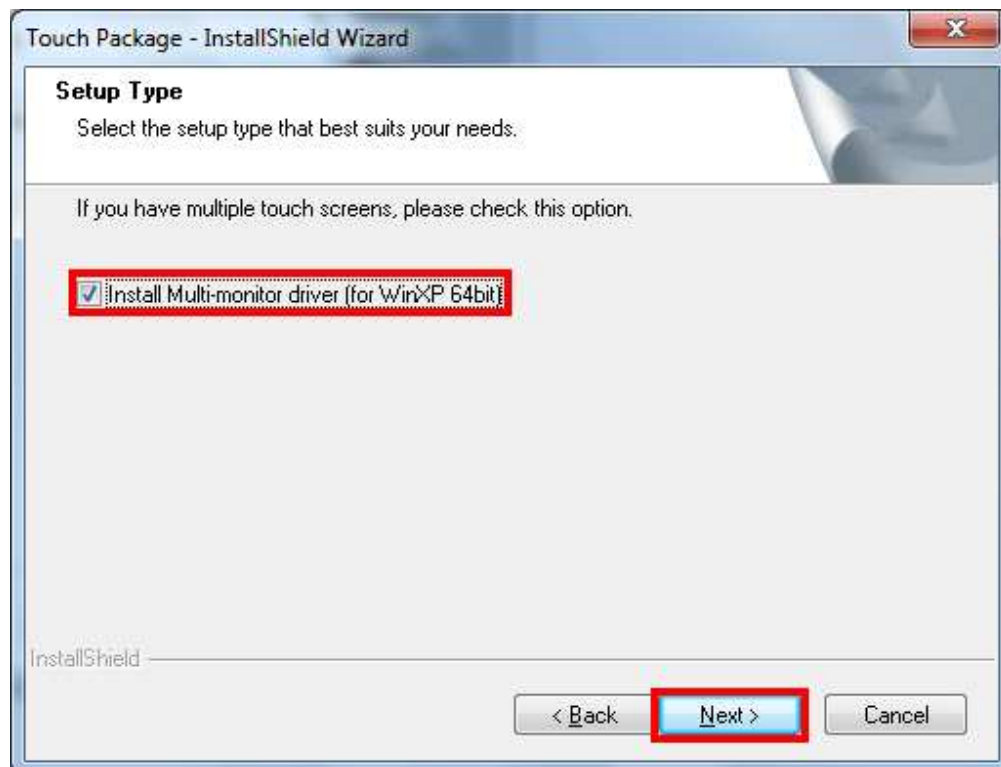
BACK→return to previous menu; NEXT→continue installation;

Cancel→exit setup.



(↑Multi-monitor **not** supported)

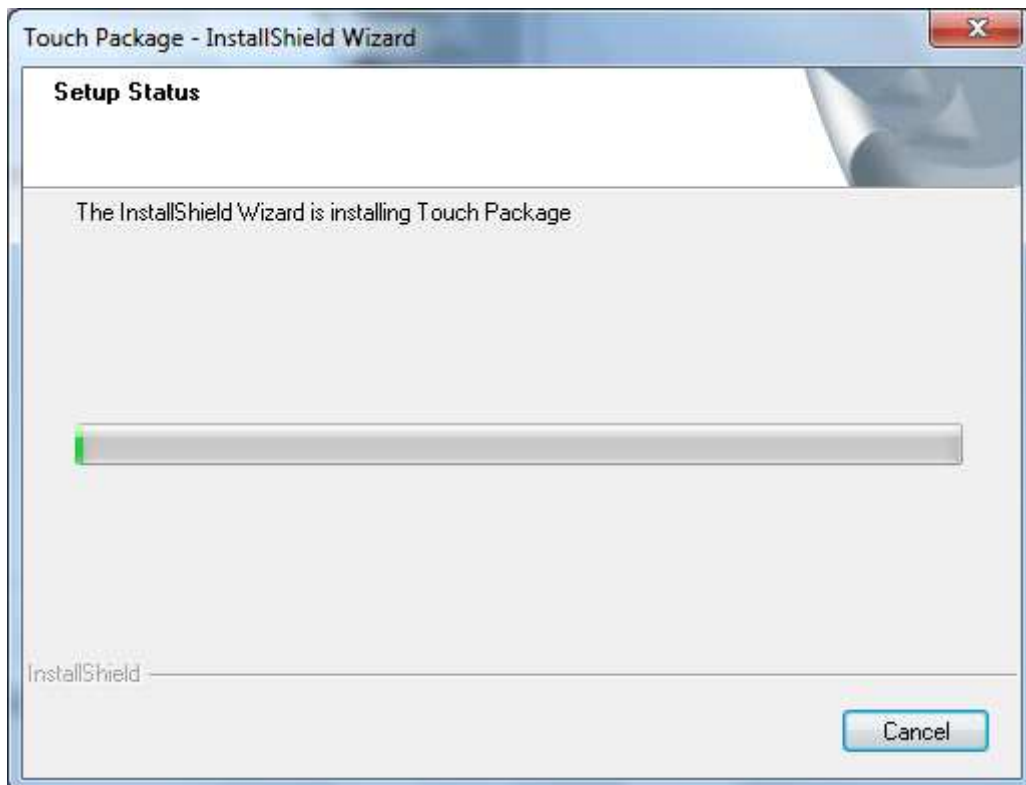
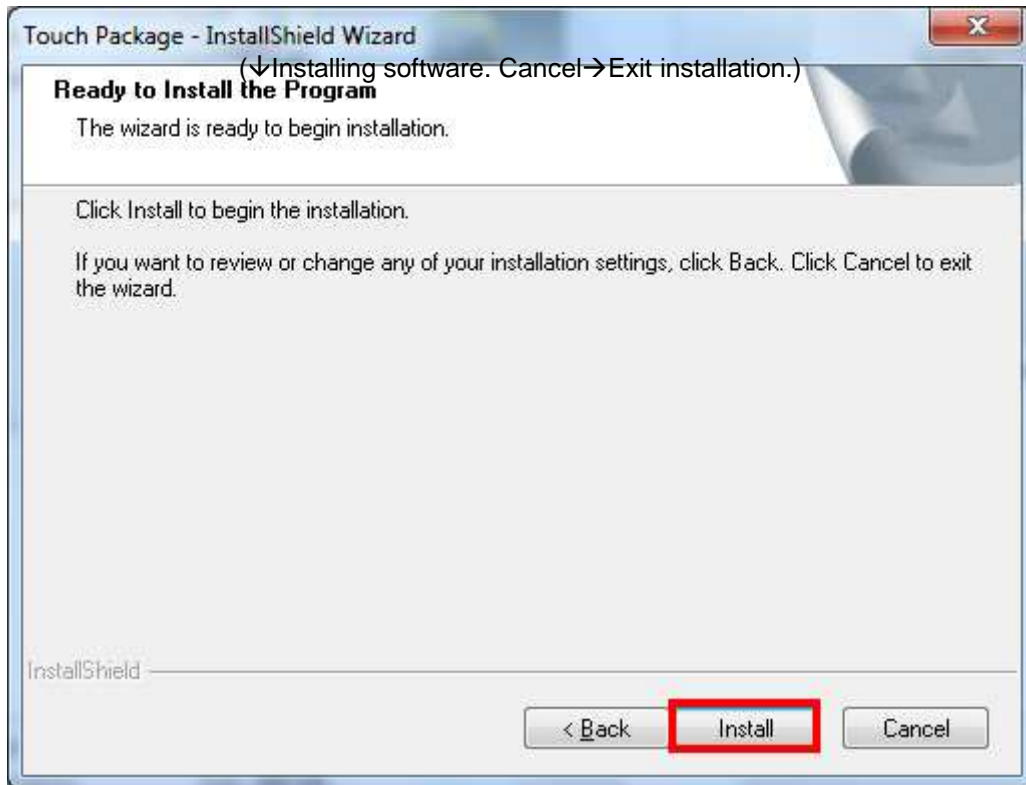
(↓Multi-monitor supported)

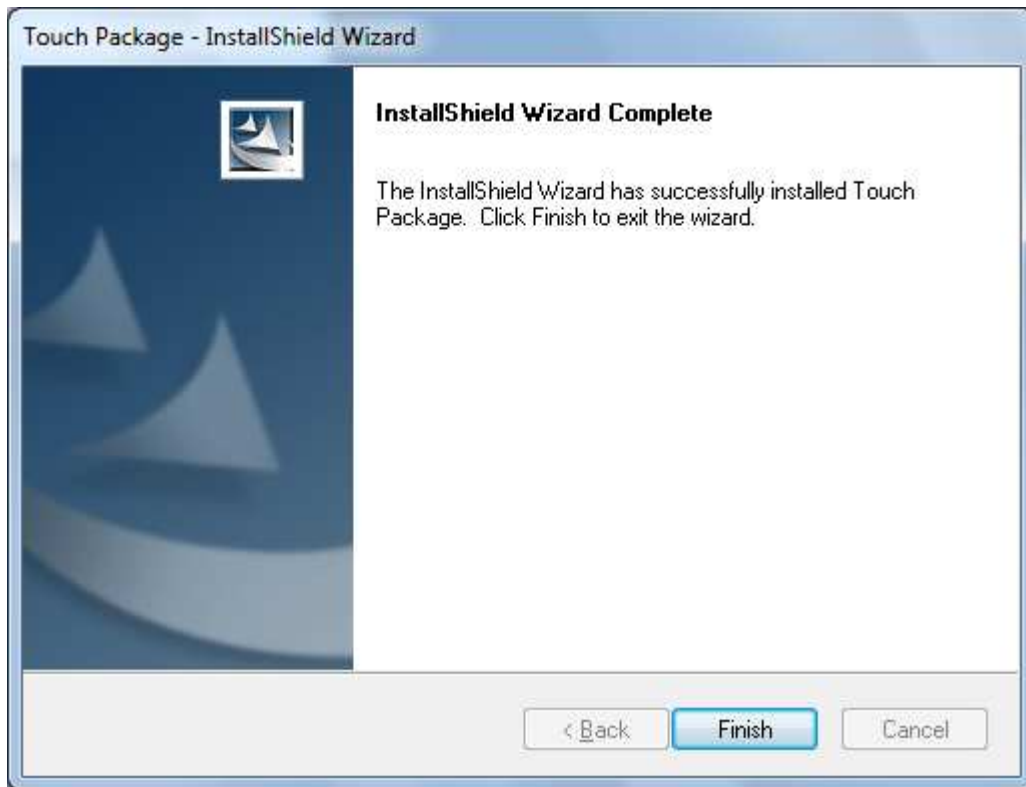


Step 6: Final confirmation for installation. For setup changes please return to previous menu.

BACK→return to previous menu; Install→Install software;

Cancel→exit setup.



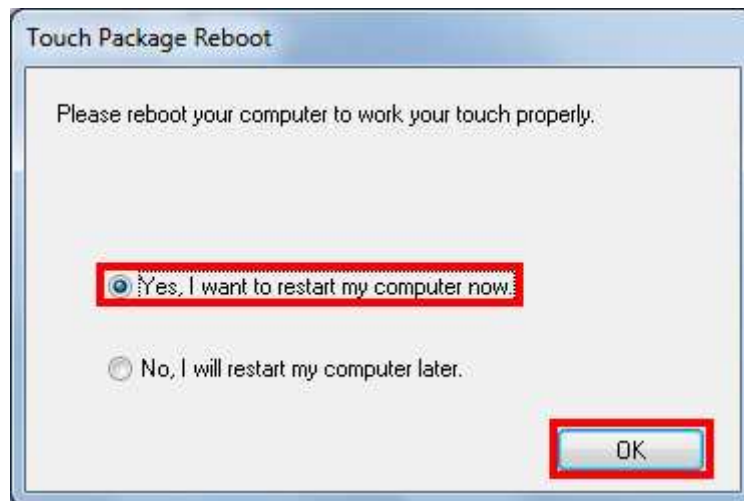


(↑Installation complete. Click "Finish" to exit menu.)

Step 7: Confirm reboot.

YES→Restart computer immediately.

NO→Restart computer later.



Touch Driver User Guide

Touch Package Introduction:

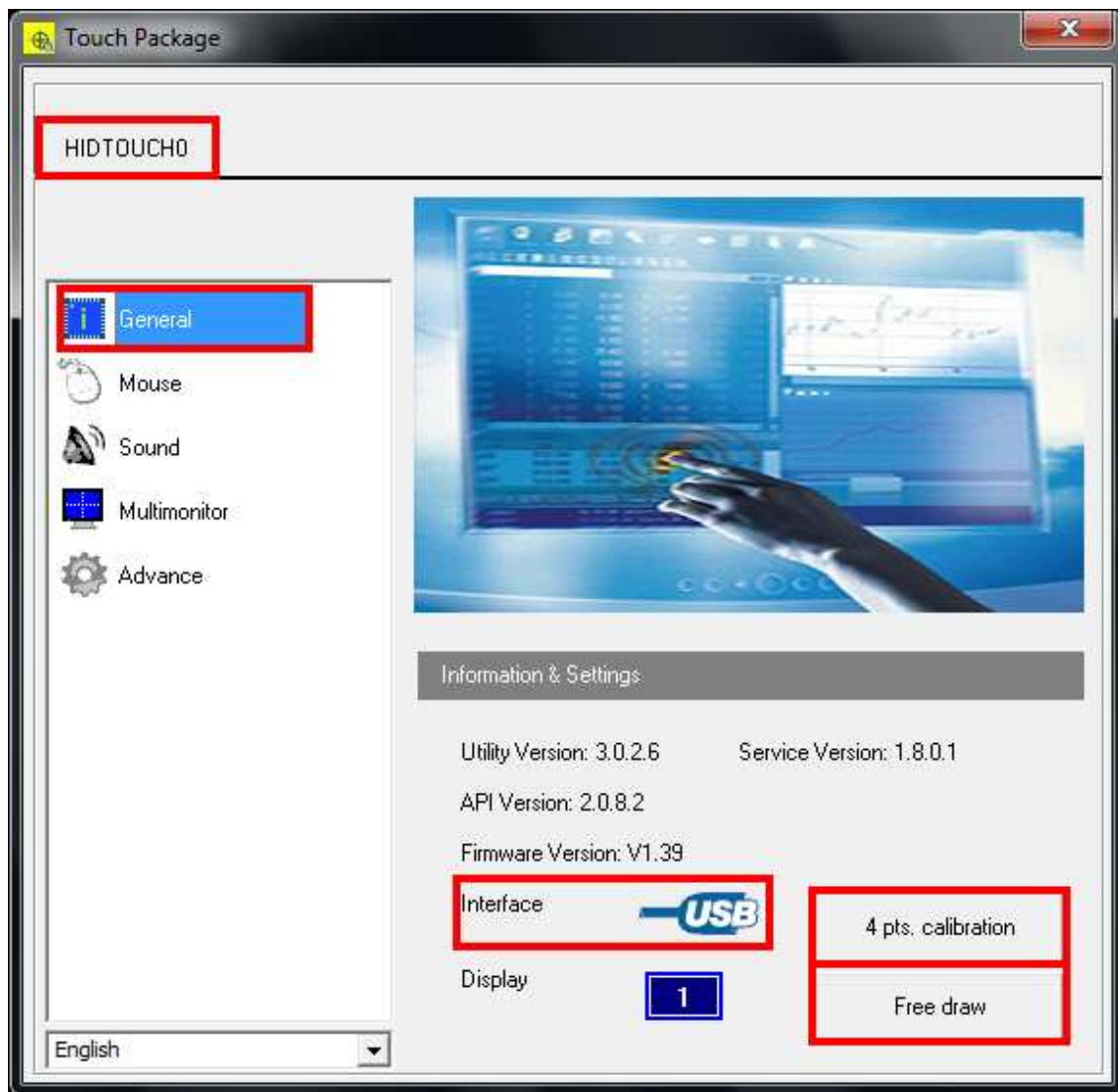
This touch software consists of 5 main function groups:

“General”, “Mouse”, “Sound”, “Multimonitor”, “Advance”.

Touch software provides device to adjust the touch function and modifies it to better serve the customer’s needs.

Touch Package Function Explanation:

◆ General



HIDTOUCH0 : touch controller code.

Utility Version: Touchpack.exe version.

Service Version: Touchpackservice.exe version.

API Version: Touchapi.dll version.

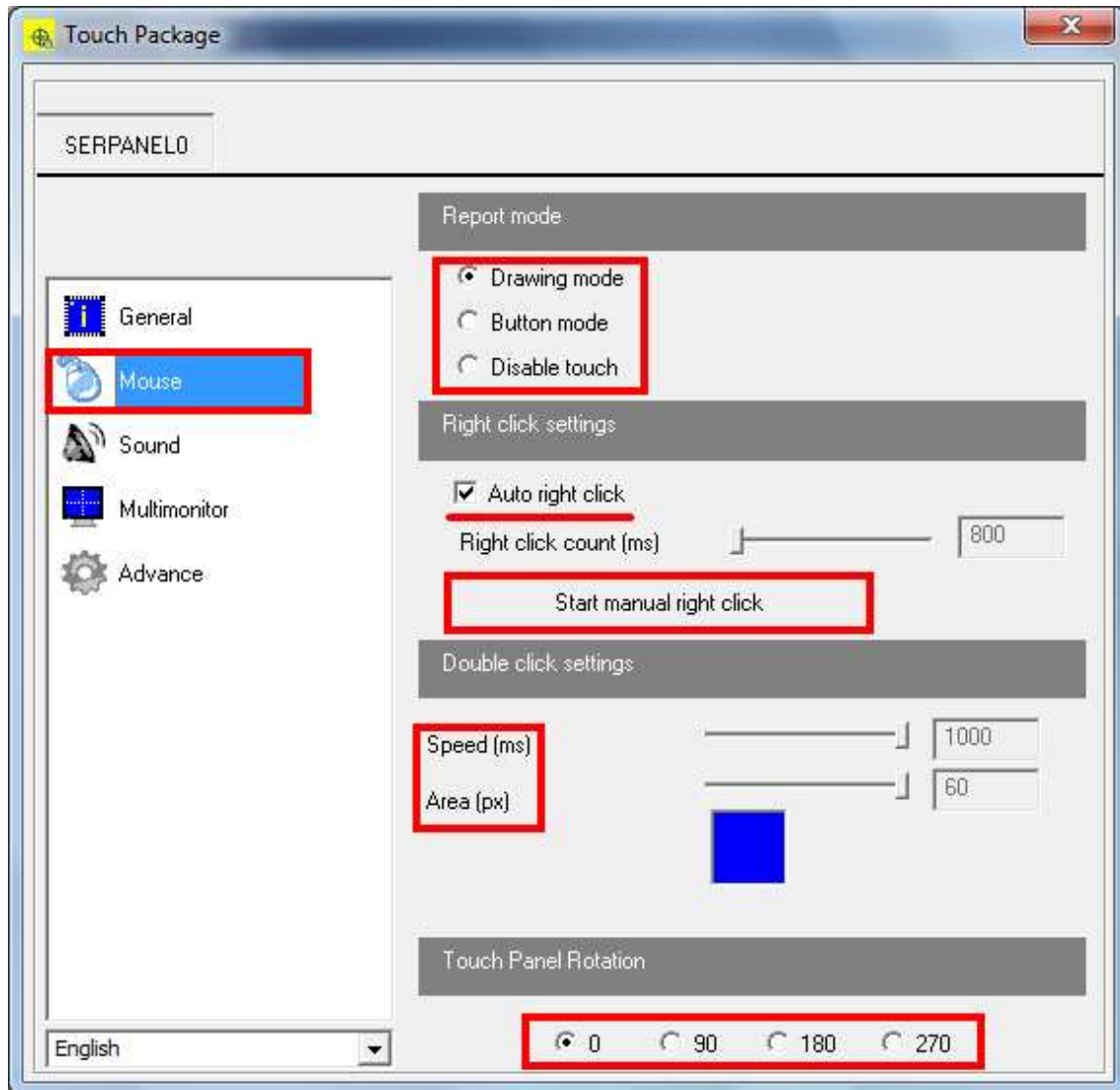
Interface: either USB or RS32 interface; figure above shows USB interface.

Display: system monitor corresponded to the touch hardware.

4 pts. Calibration: provides user to conduct basic four point calibration.

Free draw: provides user to test drawing function or click function accuracy.

◆ Mouse



I. Report Mode

Consist of “**Drawing mode**”, “**Button mode**”, and “**Disable touch**”.

1. Drawing mode: provides continuous reporting “pen down→drag→pen up” all at once. Can be used for operations such as signature, drawing, dragging items...etc.
2. Button mode: provides only two report “pen down→ pen up”. Can be used for click selection.
✖ Cannot use dragging and drawing action.
3. Disable touch: stop reporting and disable touch function.
✖ This will stop touch function once confirmed. To restore touch function requires mouse to turn on drawing mode or button mode.

II. Right Click Settings

1. Auto right click: creates automatic right click when user pen down and not move for a while.
2. Right click count: controls time required for right click menu to show up.
3. Start manual right click: creates mouse icon after startup. When user click on the icon, pen down and pen up onto the desired position to create right click.

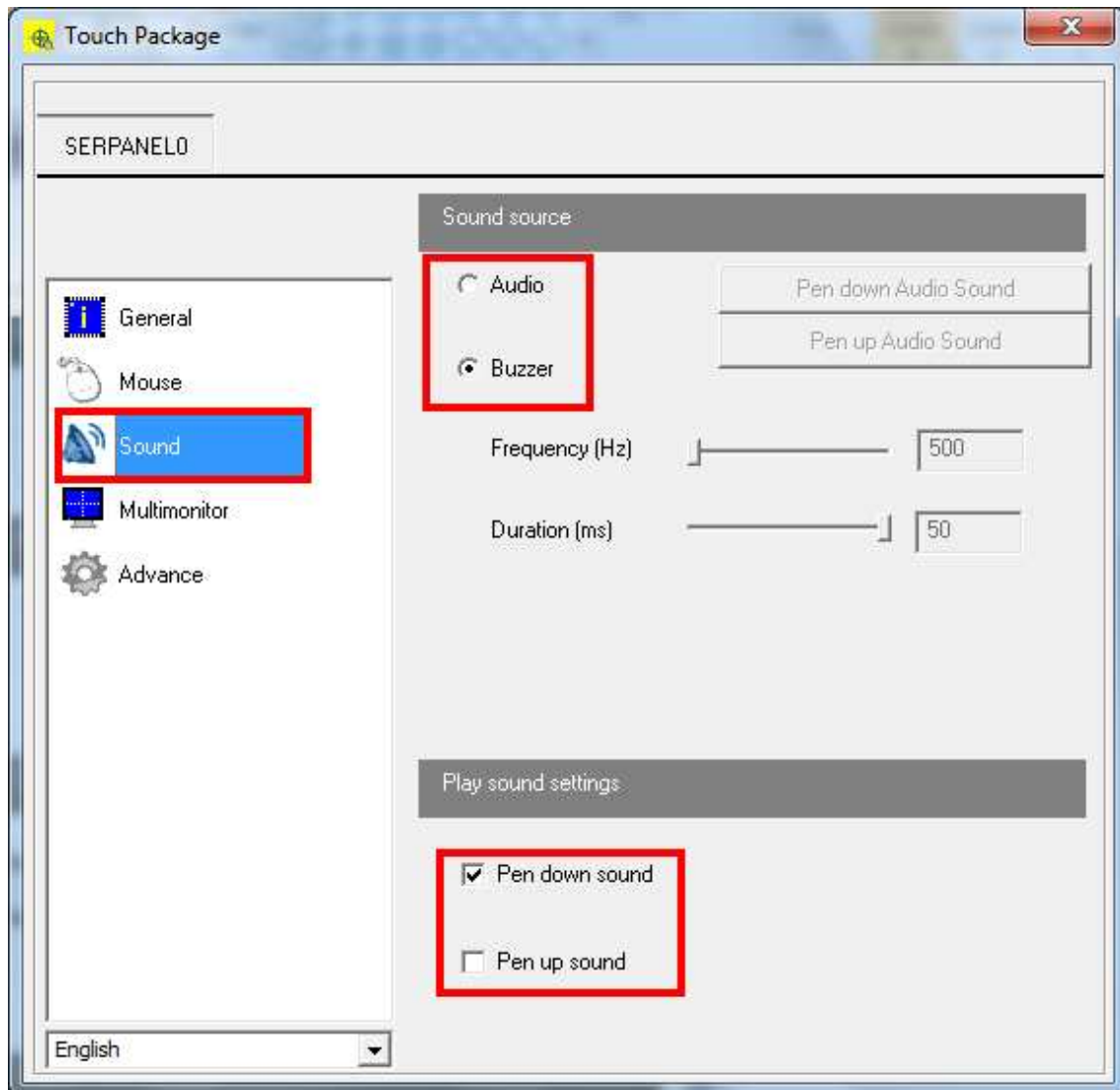
III. Double Click Settings

1. Speed: controls time required for double click to open or perform continuous clicks.
2. Area: controls size and range for double click to come to effect.

IV. Touch Panel Rotation

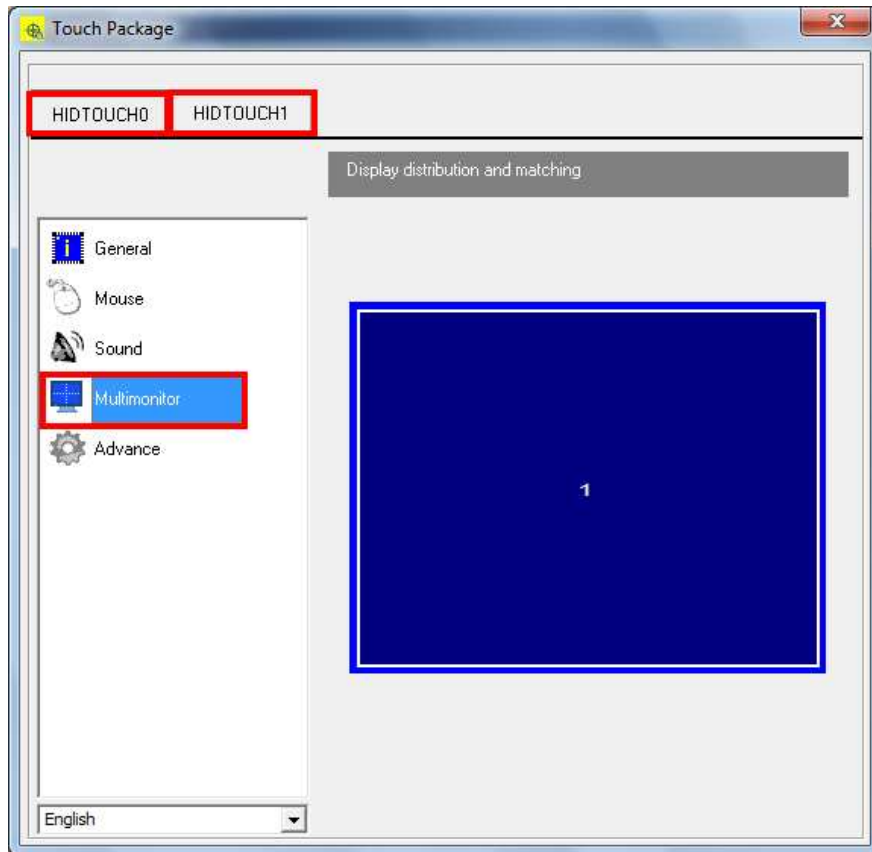
1. Supports touch rotation with display for 0°, 90°, 180°, and 270°.

◆ Sound



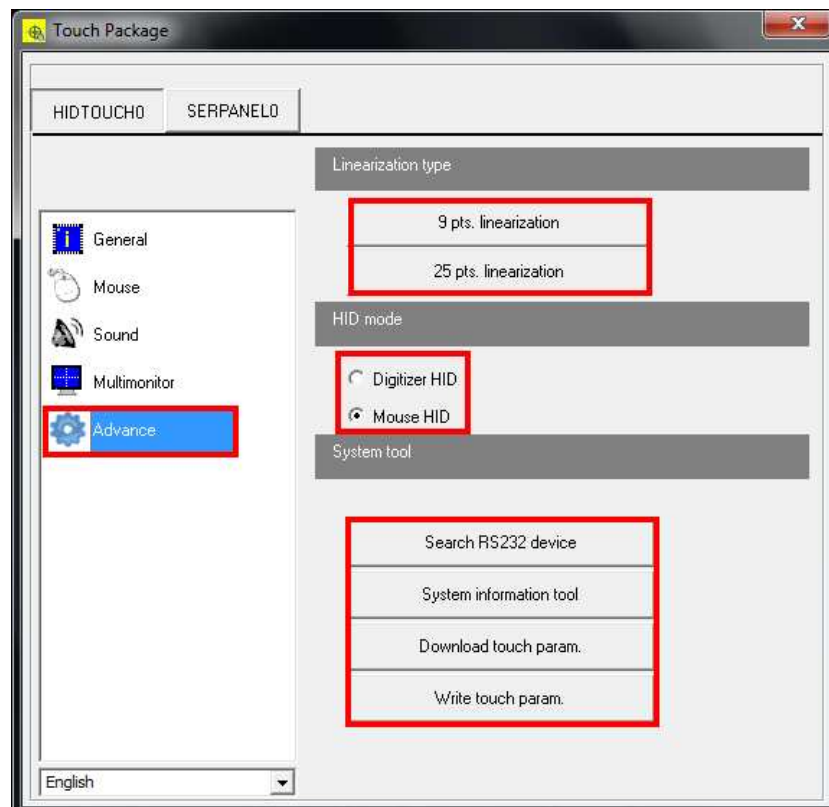
1. Sound source: select from "Audio" to load audio file or from "Buzzer" to create sound. User can adjust frequency and duration of the sound.
2. Play sound settings: can select to play sound for pen down or pen up; can select both or select none.

◆ Multimonitor



Display distribution and matching: supports multi-monitor touch and display with matching

◆ Advance



I. Linearization Type

Depend on the condition of touch screen, user can use 9 pts. or 25pts. linearization to setup touch accuracy.

II. HID Mode

1. Digitizer HID Mode: support Windows Vista or Windows7 or above for gesture function.
2. Mouse HID Mode: do support Windows Vista or Windows7; however, calibration requires switching to Digitizer HID Mode and using built-in calibration function.

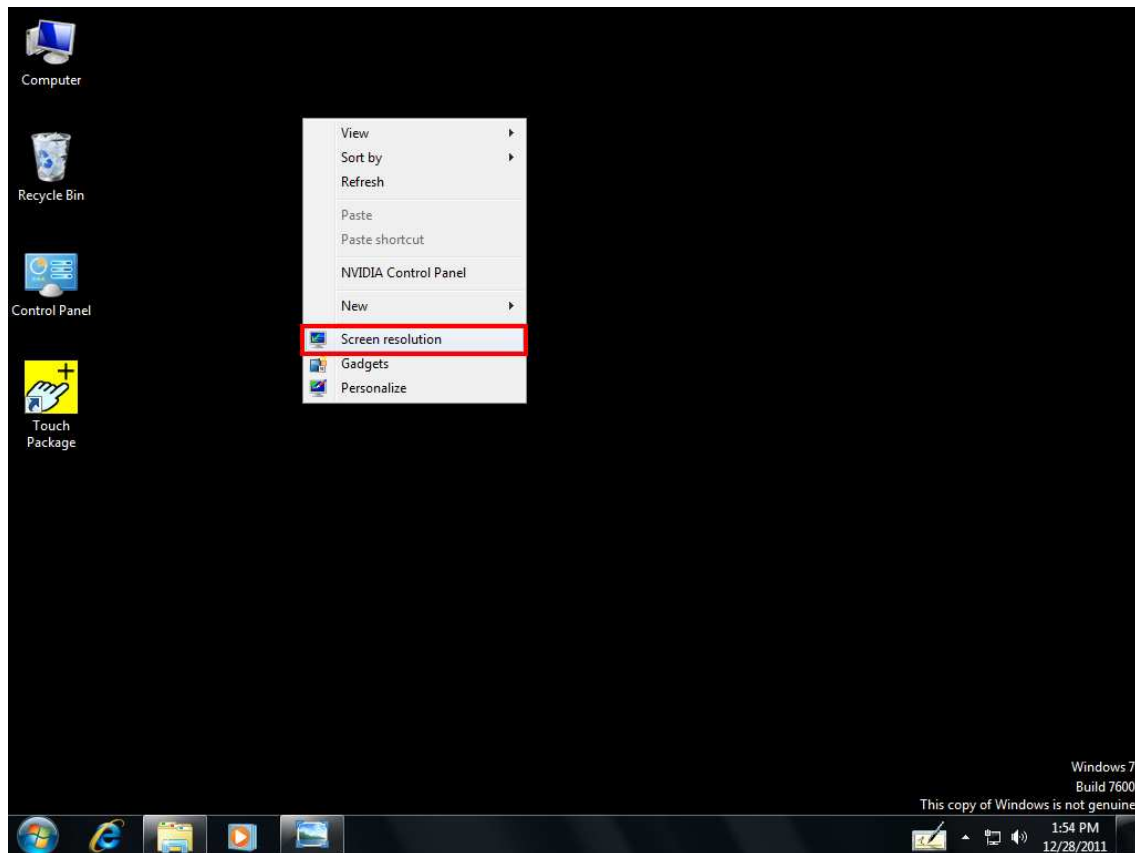
III. System Tool

1. Search RS232 device: search for non-plug-and-play RS232 device.
2. System information tool: search computer hardware system information.
3. Download touch param.: download touch parameter as a file for manufacturer's engineers to analyze troublesome system.
4. Write touch param.: after completion of troublesome system analysis, if engineer can use change in parameter to solve user problems, user can load parameter provided by engineer and write into hardware.

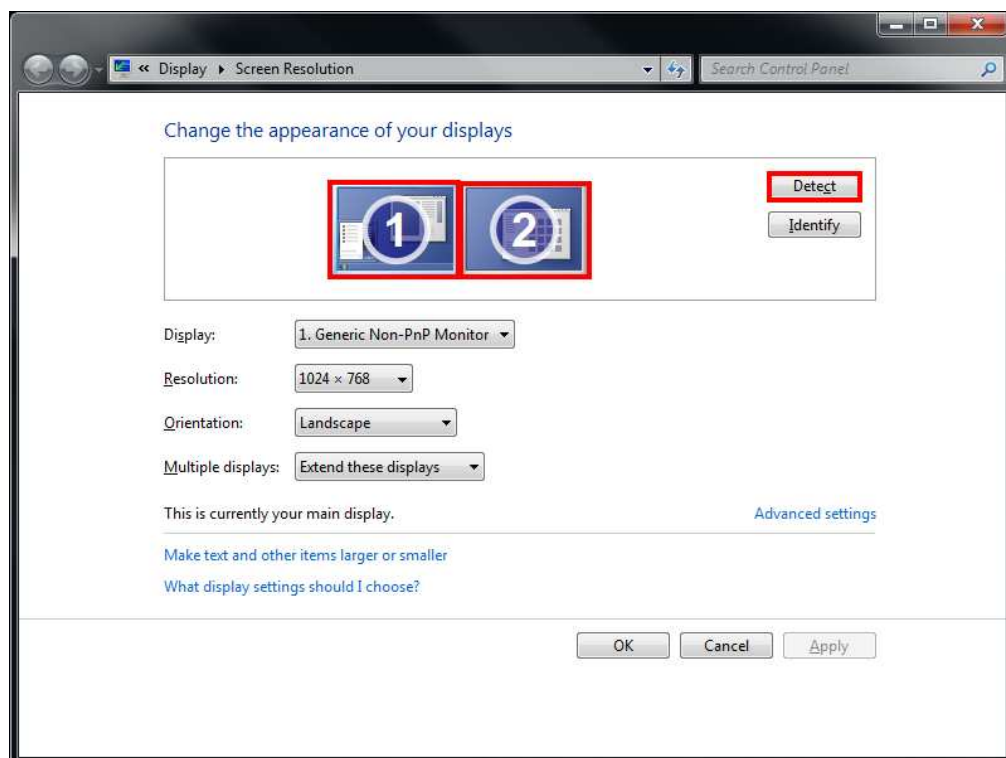
Multi-Monitor Set-Up for Windows 32-bit

◆ Detect Display

Step 1: after connecting monitor to the computer, use mouse right click and select “Screen Resolution”.



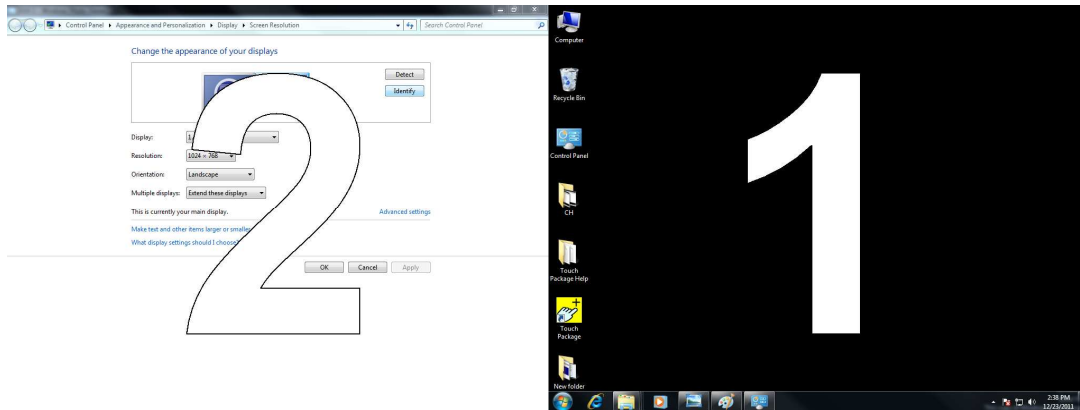
Step 2: click on “Detect” on the upper-right corner to search for connected monitor.
(Figure below shows 2 detected monitors)



AIM TOUCH USER GUIDE.

After monitor detection, select "Identify." The monitor will show screen identifier.

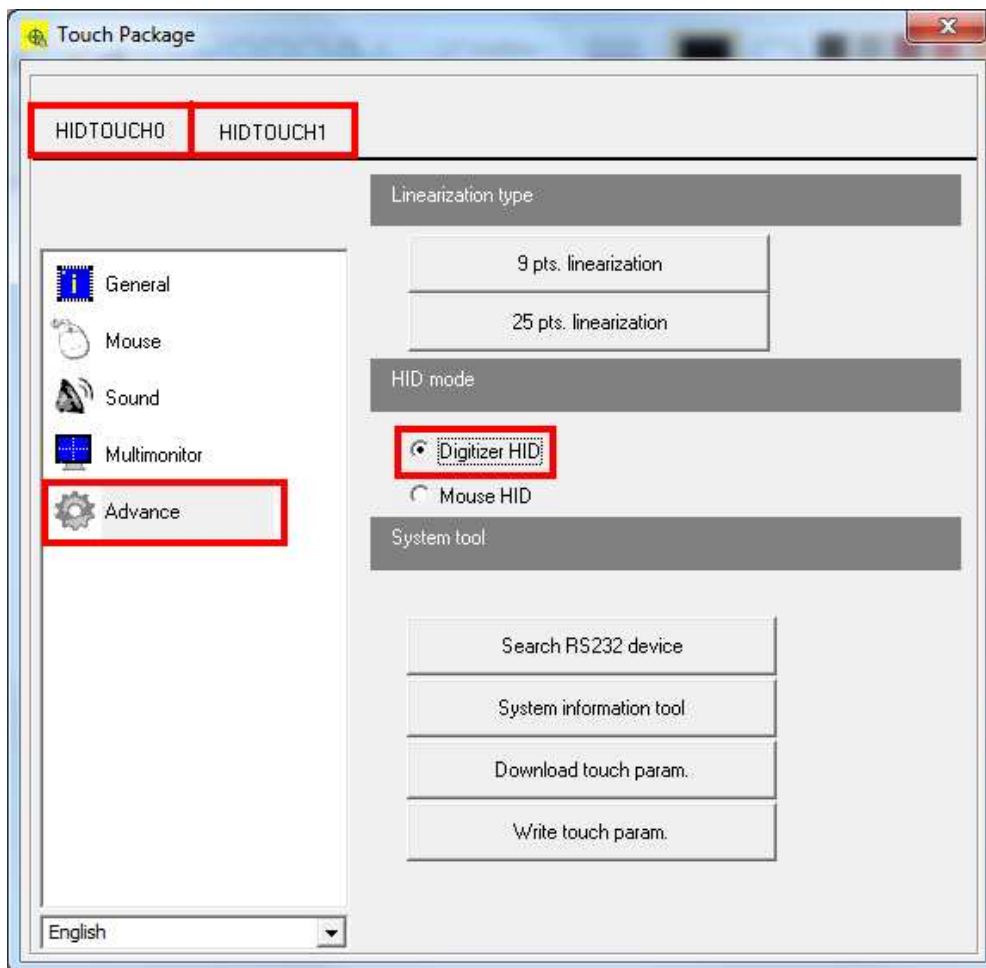
(Second monitor shown on the left, first monitor shown on the right.)



◆ Multimonitor (Digitizer HID Mode)

Step 1: setup all touch devices to Digitizer HID Mode.
Open Touch Package→Advance→Select Digitizer HID.

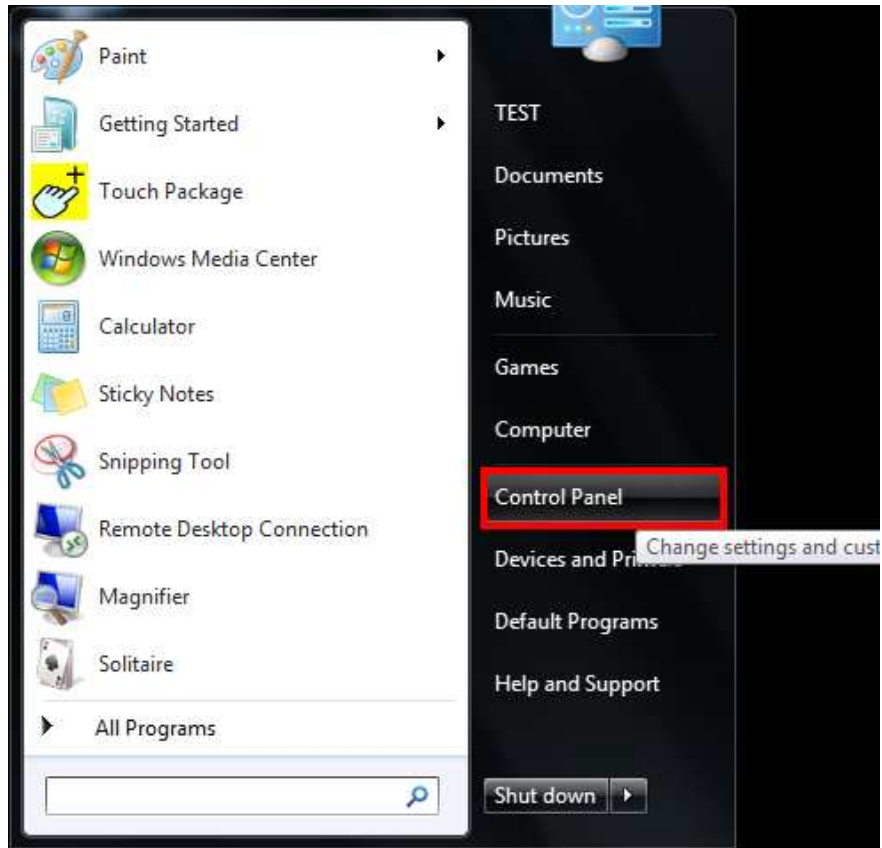
(Figure below shows HIDTOUCH0 and HIDTOUCH1 when 2 touch devices are connected)



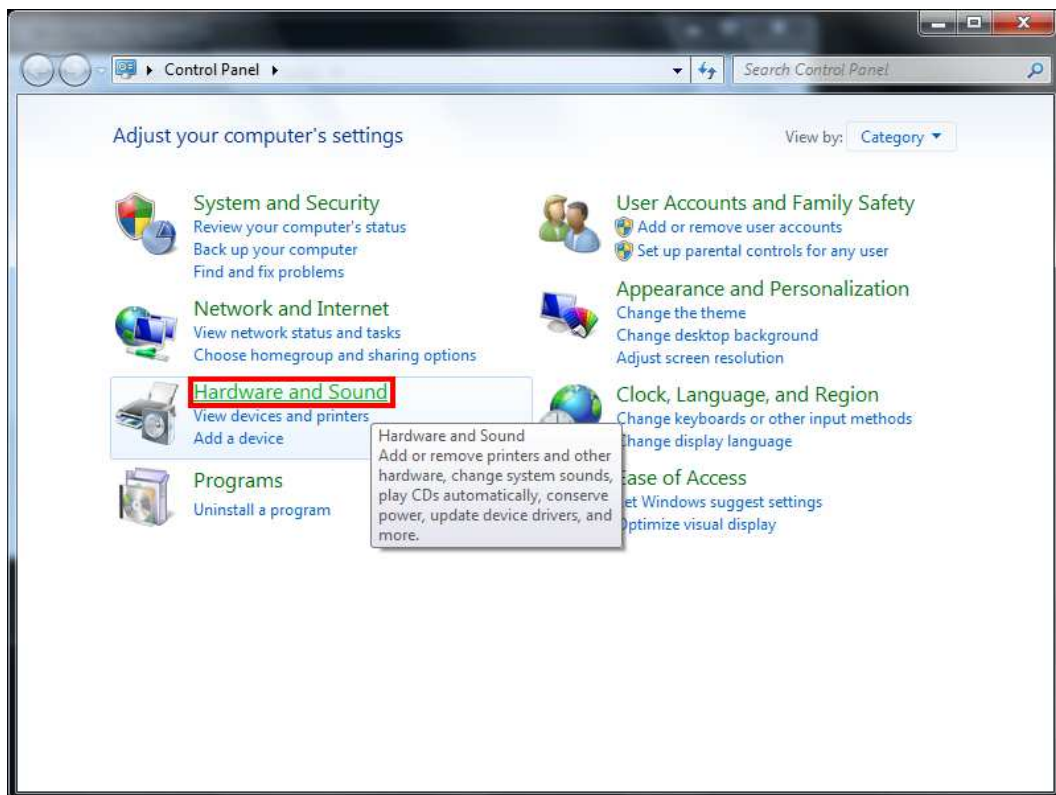
AIM TOUCH USER GUIDE.

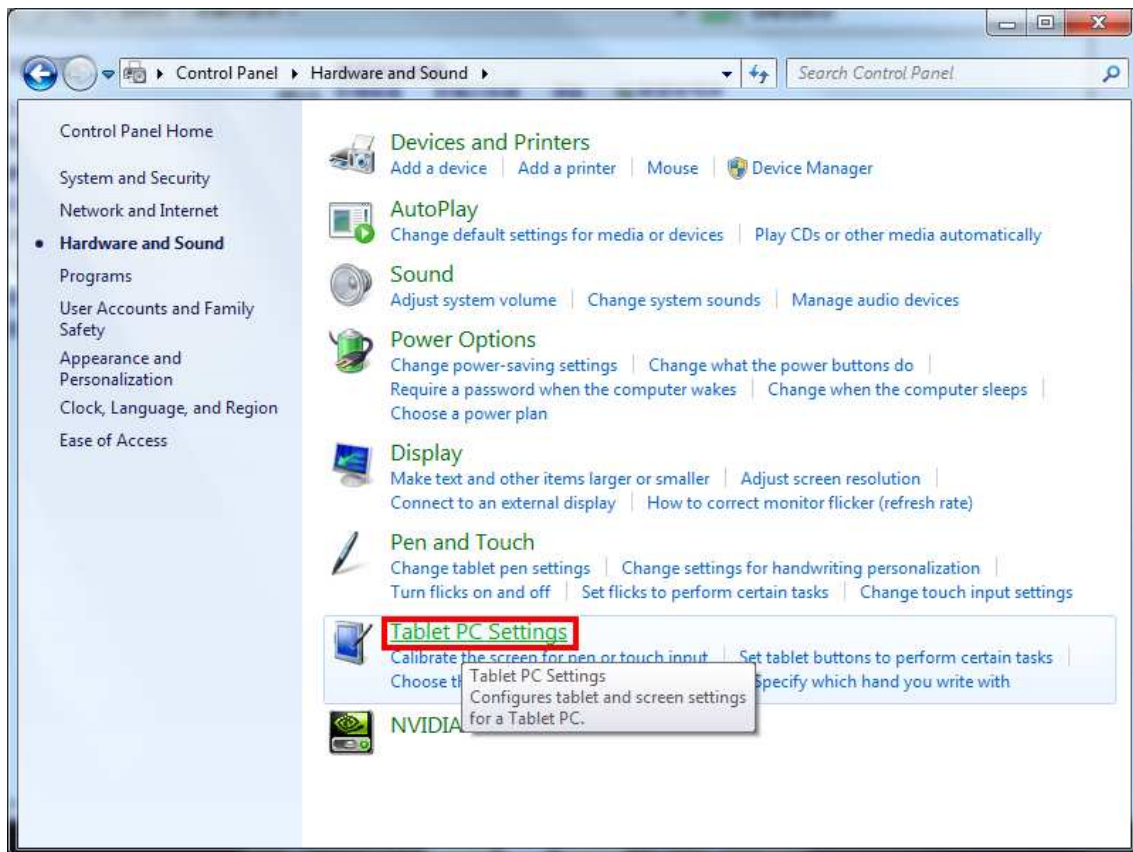
Step 2: Tablet PC setup

Click “Start Menu” → “Control Panel” to open.

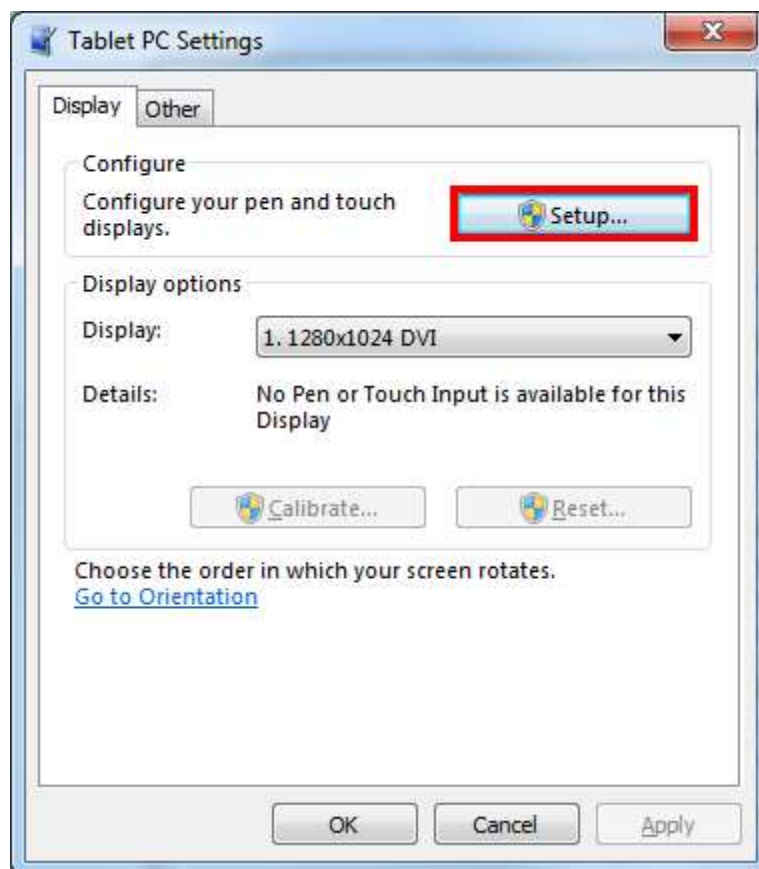


Select “Hardware and Sound” → “Tablet PC Settings”





Select "Setup" to operate Tablet PC touch monitor matching.



AIM TOUCH USER GUIDE.

Touch this screen to identify it as the touchscreen.

If this is not the Tablet PC screen, press Enter to move to the next screen. To close the tool, press Esc.

(↑Under this screen, touch the second touch monitor twice.)

Press Enter to proceed to the next step to complete your configuration

(↑Press ENTER on keyboard to confirm match-up)

Touch this screen to identify it as the touchscreen.

If this is not the Tablet PC screen, press Enter to move to the next screen. To close the tool, press Esc.

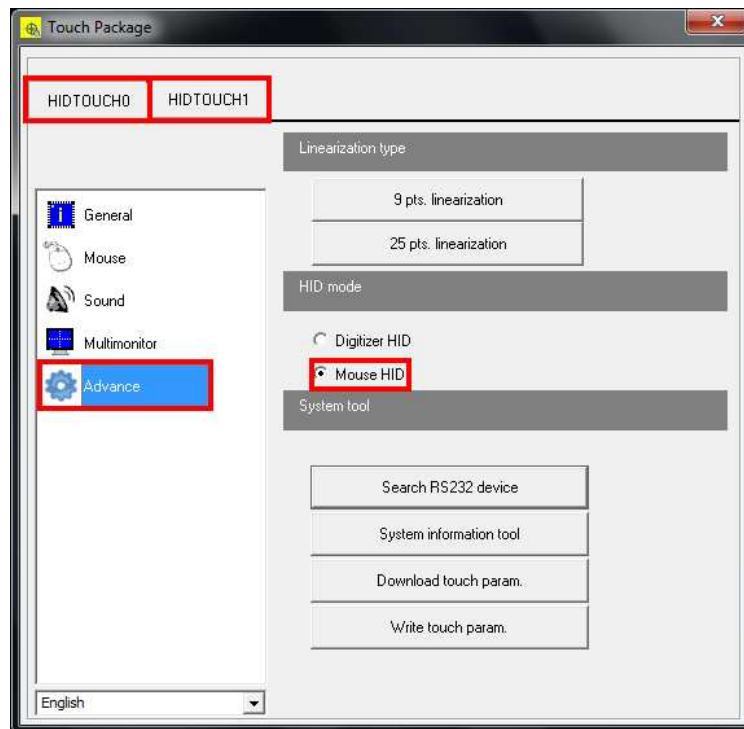
(↑Under this screen, touch the first touch monitor twice, then Press ENTER on keyboard to confirm match-up)

◆ Multimonitor (Mouse HID Mode)

Step 1: setup all touch devices to Mouse HID Mode ◦

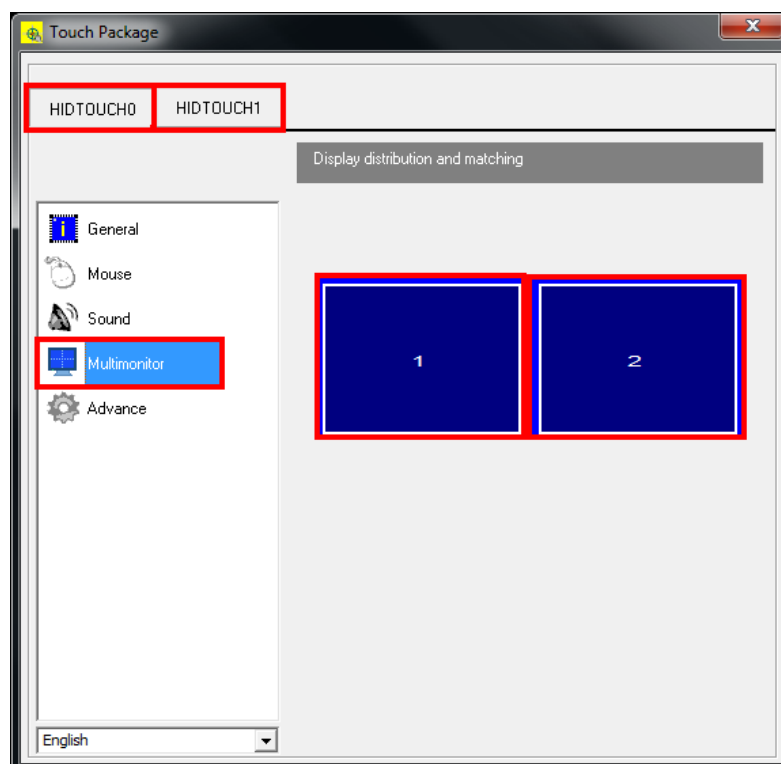
Open Touch Package→"Advance" →"HID mode"

Select from "Digitizer HID" to "Mouse HID"



Step 2: Multimonitor match-up

After switching all devices to Mouse HID Mode, select "Multimonitor" tag on the left.



(Figure above shows 2 connected monitor)

AIM TOUCH USER GUIDE.

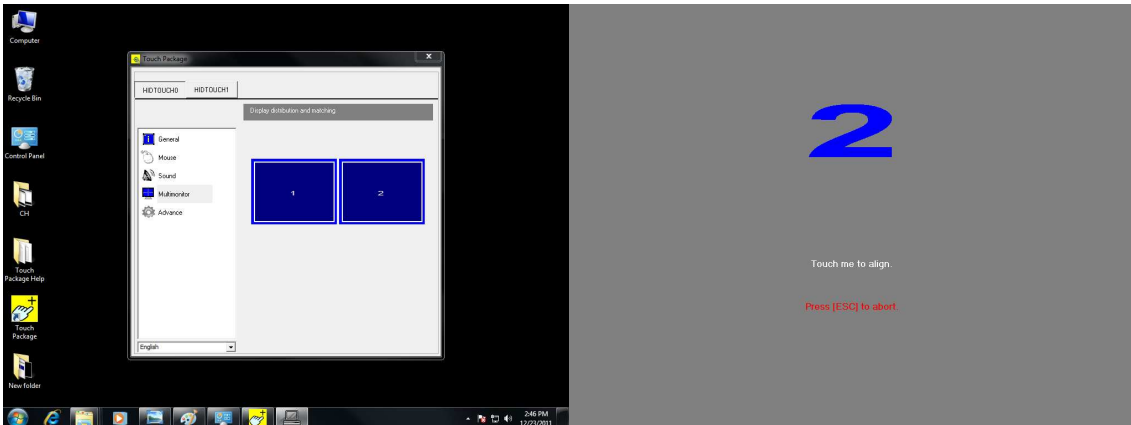
Step 3: touch and display match-up

Select Display 1 on the figure above to setup match-up.



When the monitor shows corresponding Display 1 screen, touch the monitor twice to confirm Display 1 match-up.

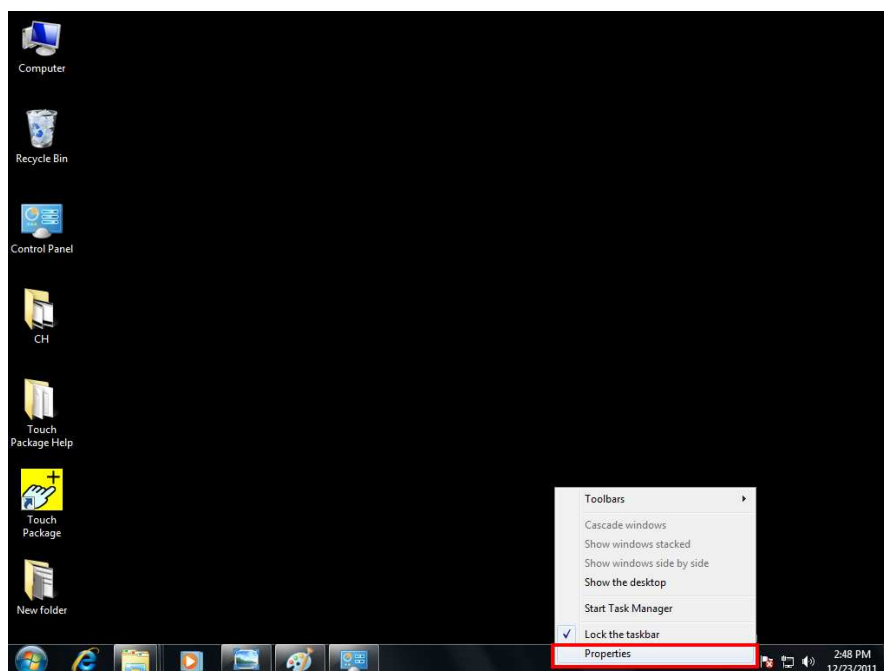
After confirmation, repeat the previous step: select Display 2 to set-up matching.



When the monitor shows corresponding Display 2 screen, touch the monitor twice to confirm Display 2 match-up.

◆ Start Tablet PC Input Panel

Step 1: Right click on Start Toolbar→select “Properties”

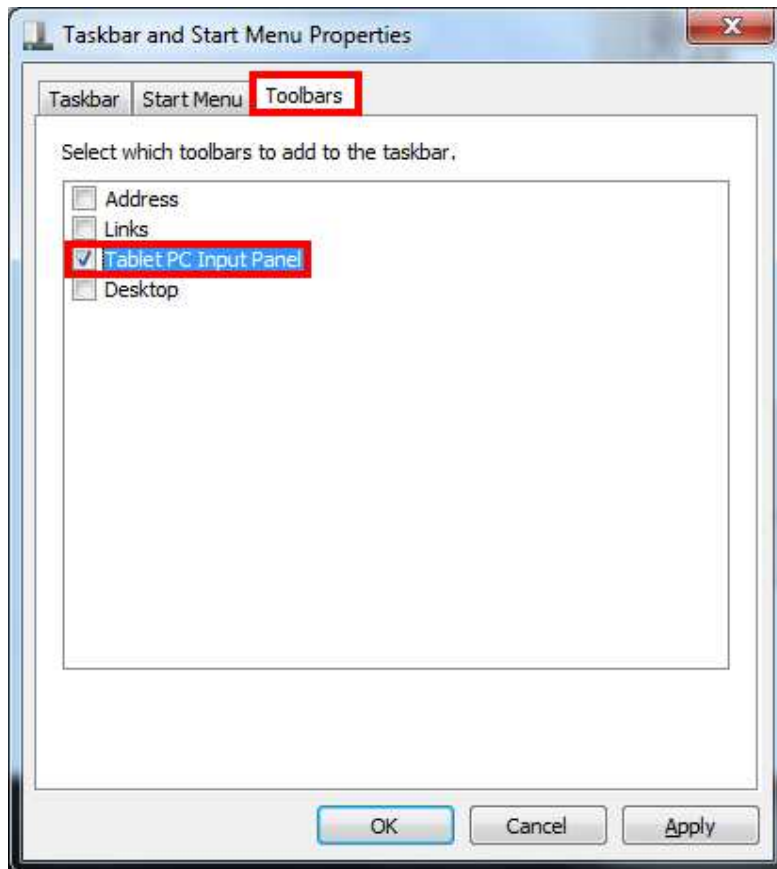


AIM TOUCH USER GUIDE.

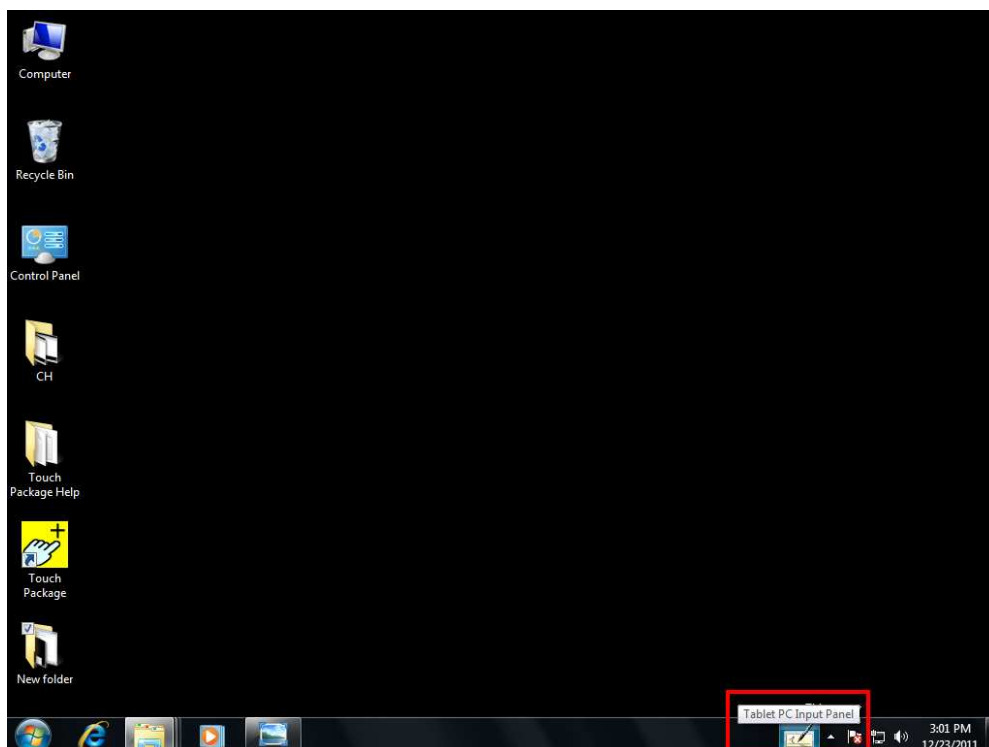
Step 2:

The window below will pop out after select "Properties".

Click on the "Toolbars" tag, tick "Tablet PC Input Panel" box, click on "Apply" and close the window.

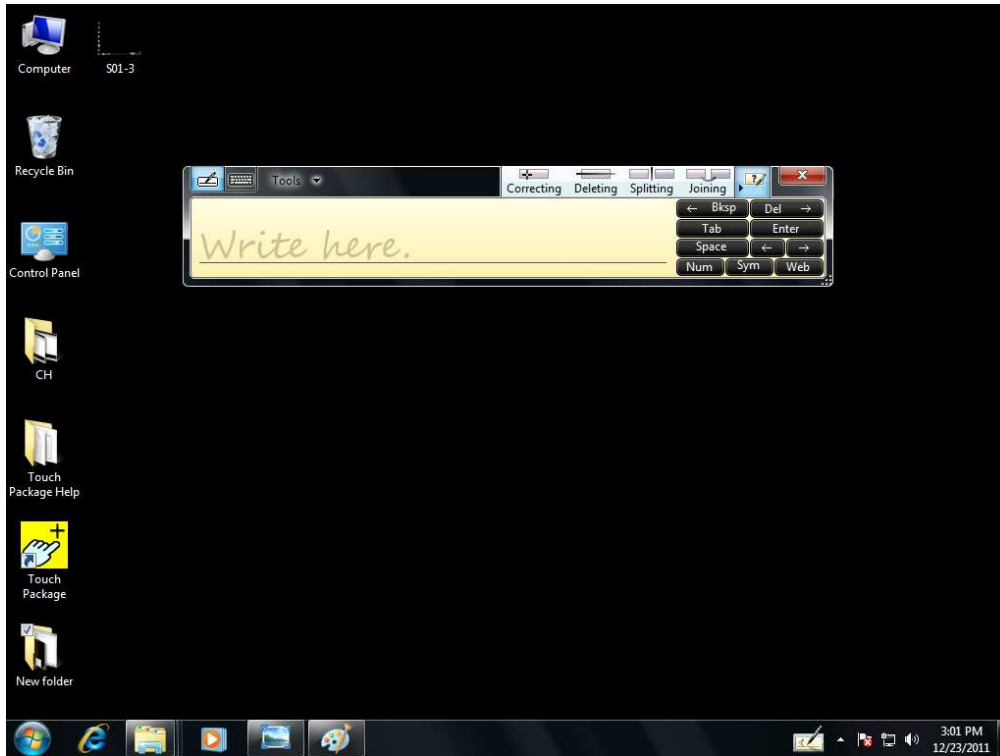


Right side of the Start Toolbar will show "Tablet PC Input Panel" shortcut.

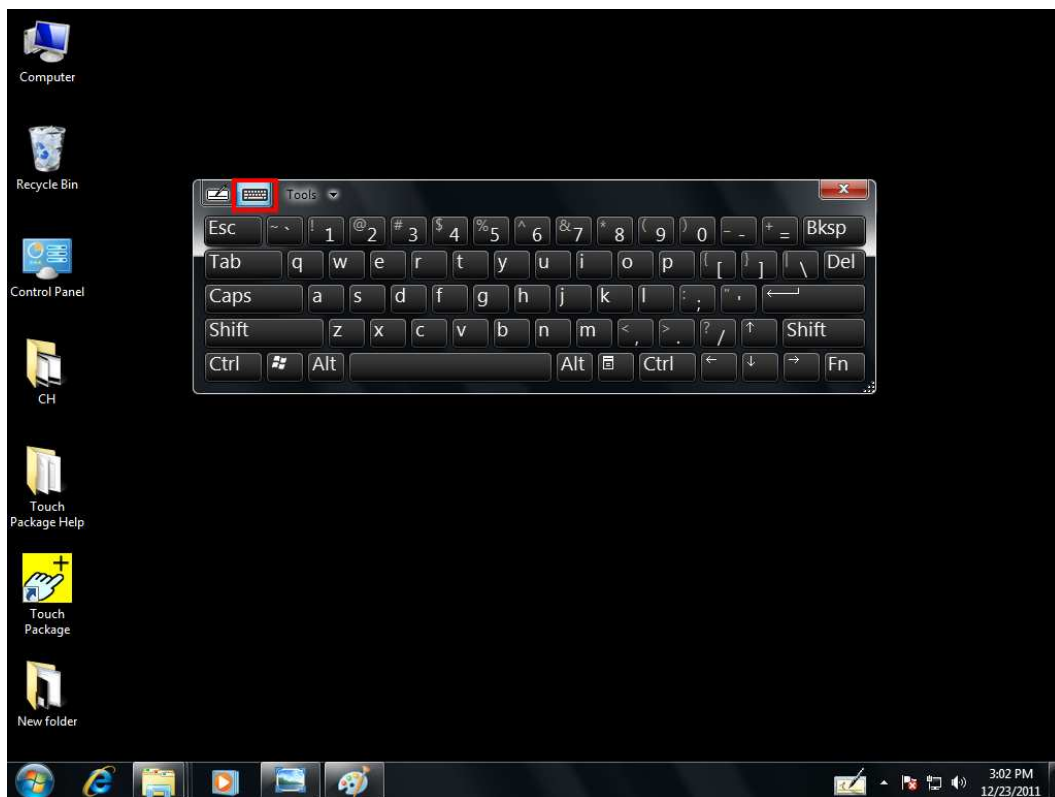


AIM TOUCH USER GUIDE.

Click icon to start input panel. This provides user for hand-writing function.



Select "Keyboard" icon on upper-left corner to switch to international keyboard mode.



Multi-Monitor Set-Up Guide for Windows 64-bit

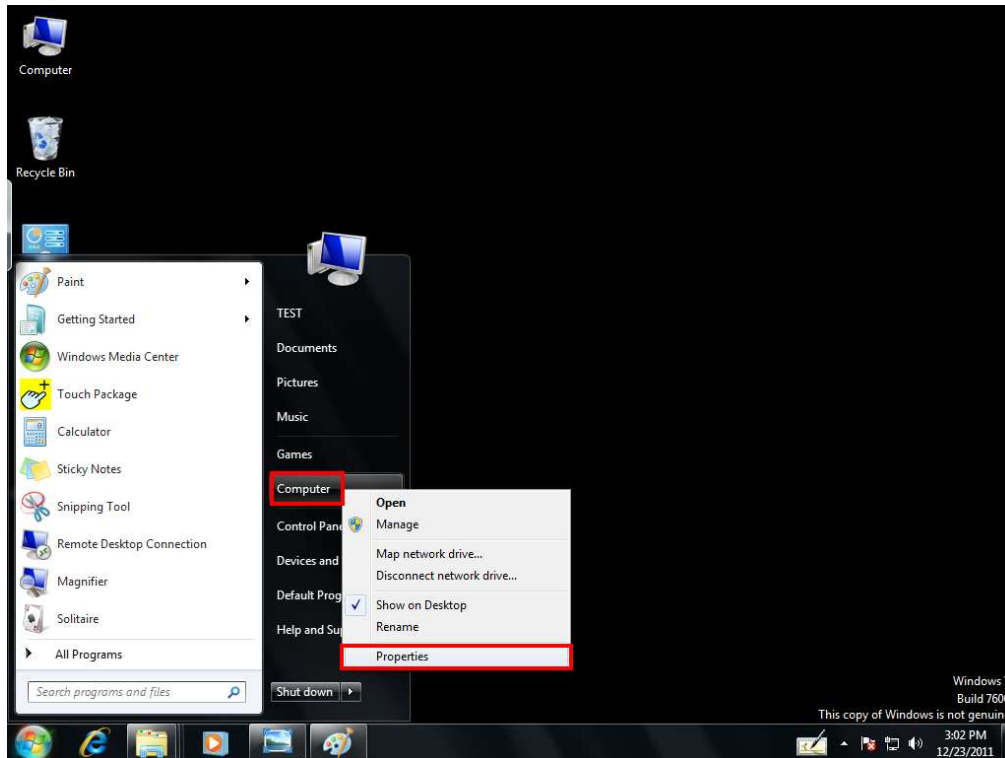
Please note that the multi-monitor function in our touch package does not support Windows 7 64-bit. User need to set-up the multi-monitor function via Microsoft built-in program. (Touch screen with RS232 interface also does not support)

Please follow the instructions below for multi-monitor set-up:

※ (If previous installation did not select multi-monitor option, please ignore this section.)

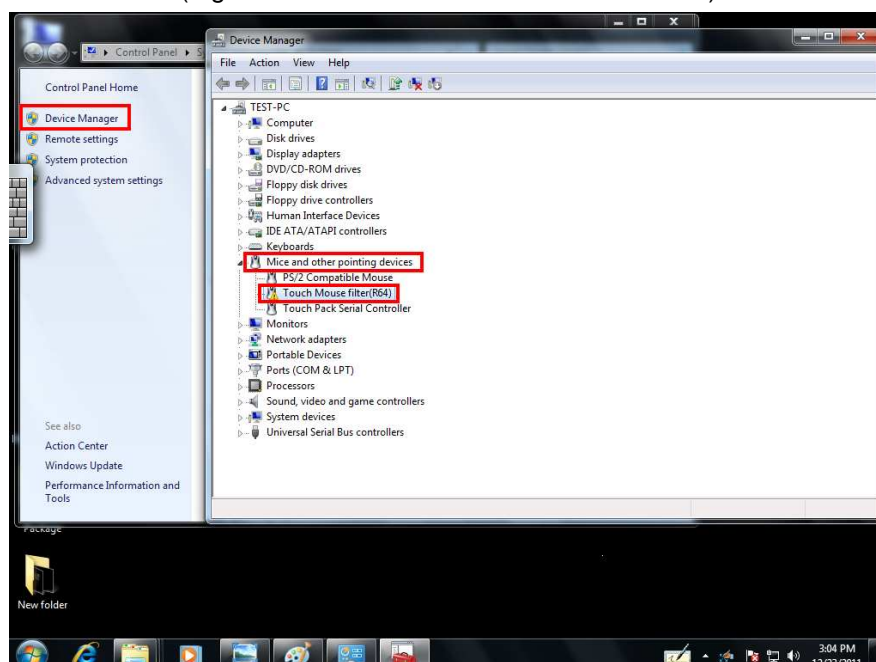
Step 1: identify whether installed Multi-monitor from Touch Package.

Please right click on “Computer” and select “Properties”



Select “Device Manager”→“Mice and other pointing devices” and check whether has “Touch Mouse filter(R64)”.

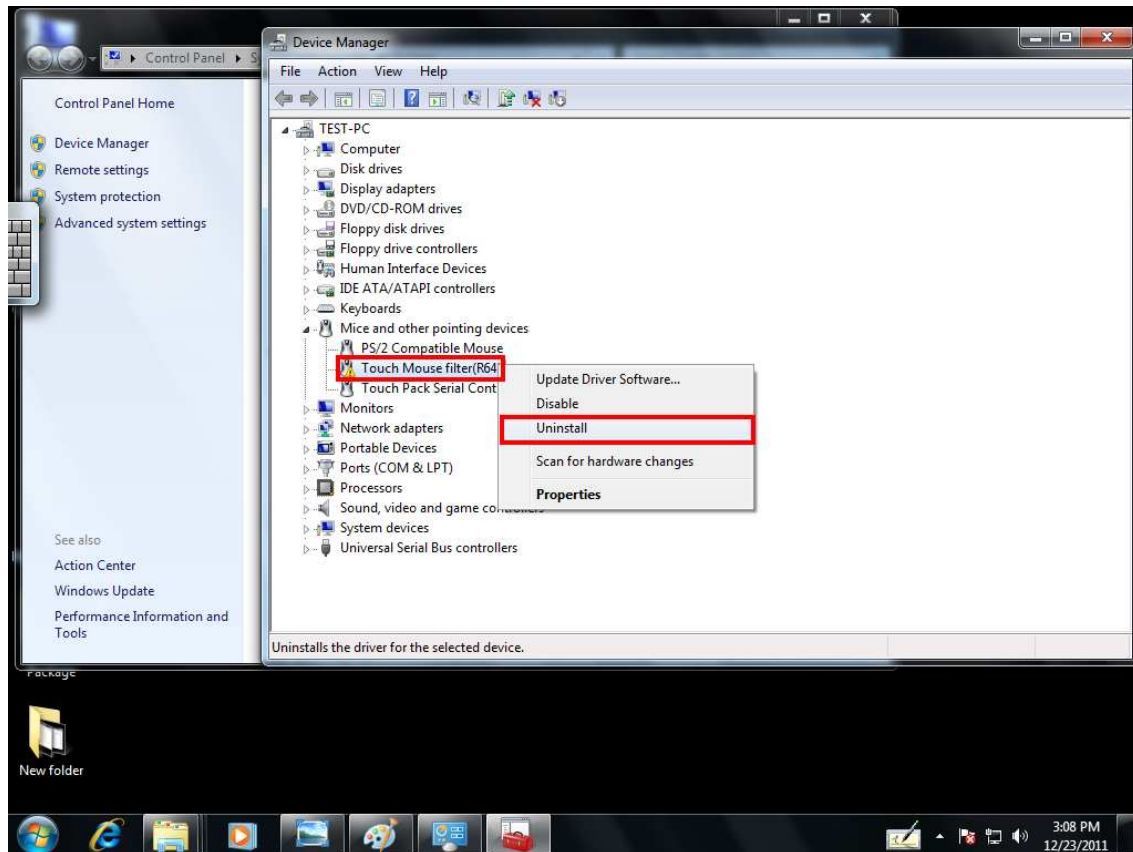
(Figure below shows “Multi-monitor” installed)



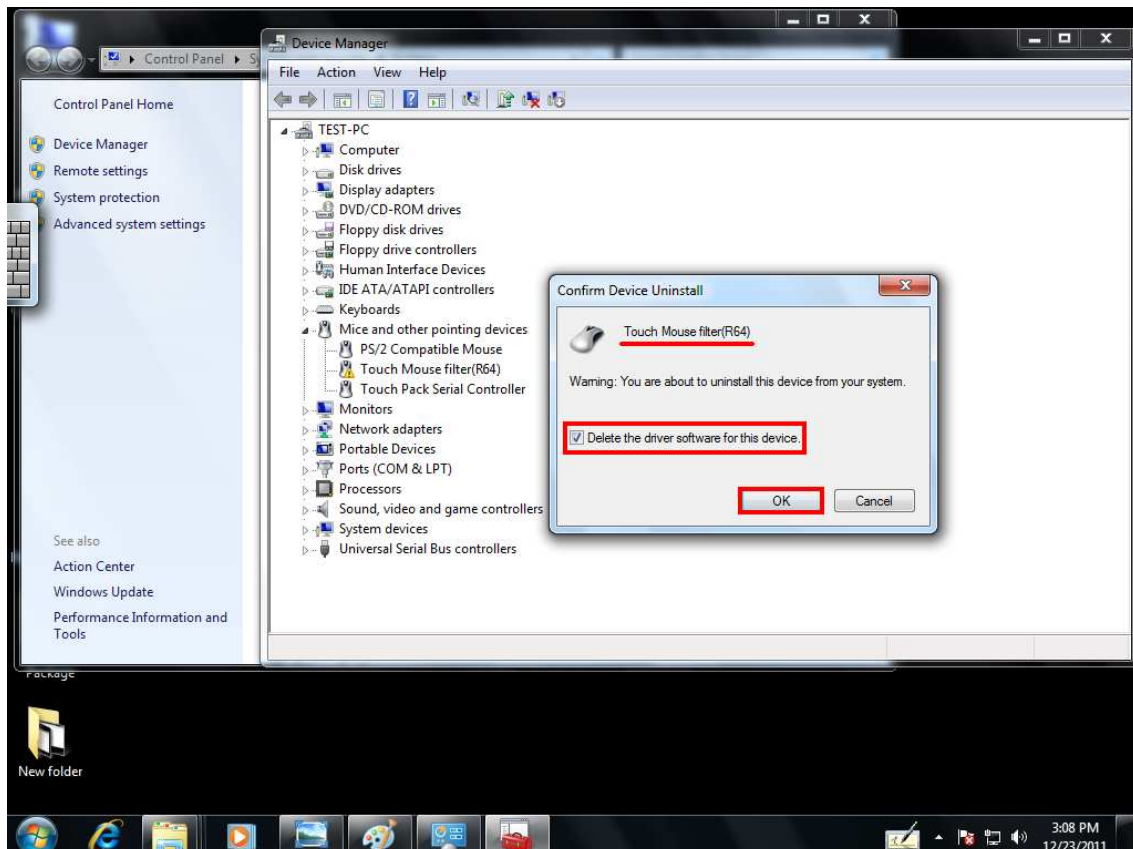
AIM TOUCH USER GUIDE.

Step 2: remove file.

Right click on the item and select “Uninstall”.

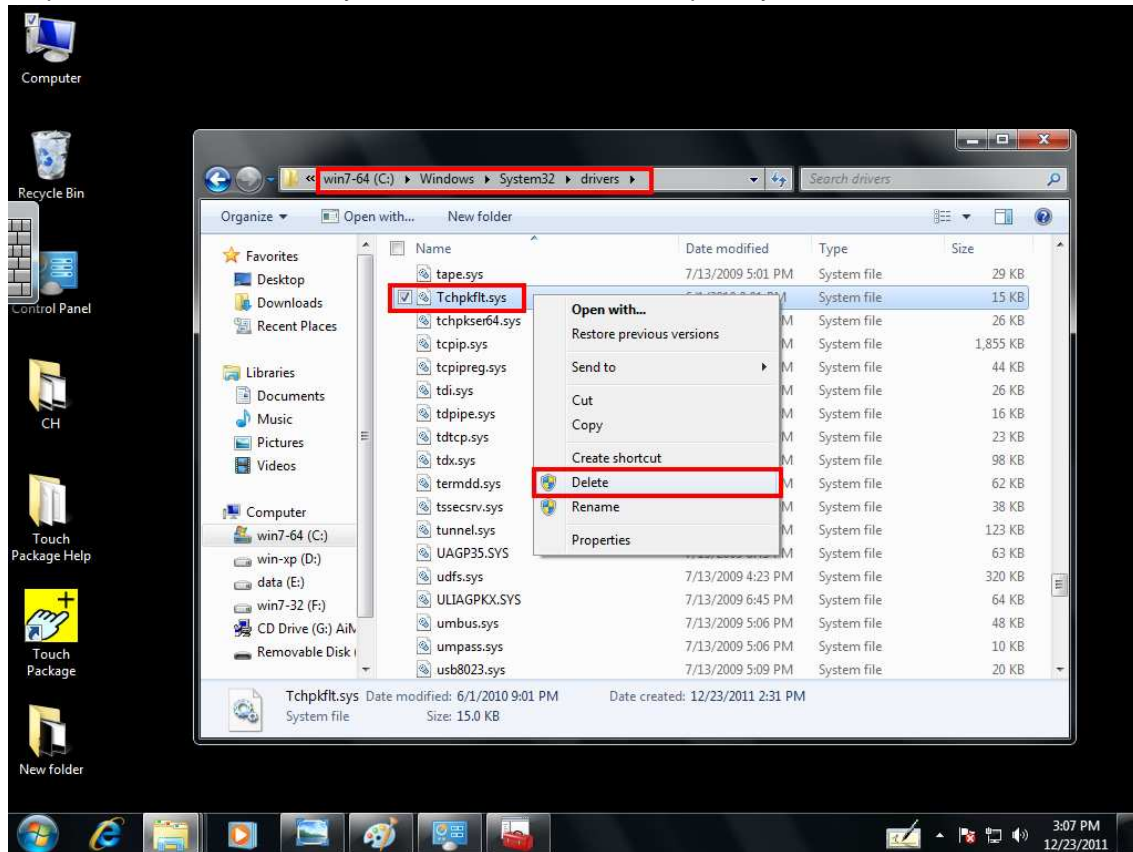


When Confirm Device Uninstall appears, tick “Delete the driver software for this device” and click OK.

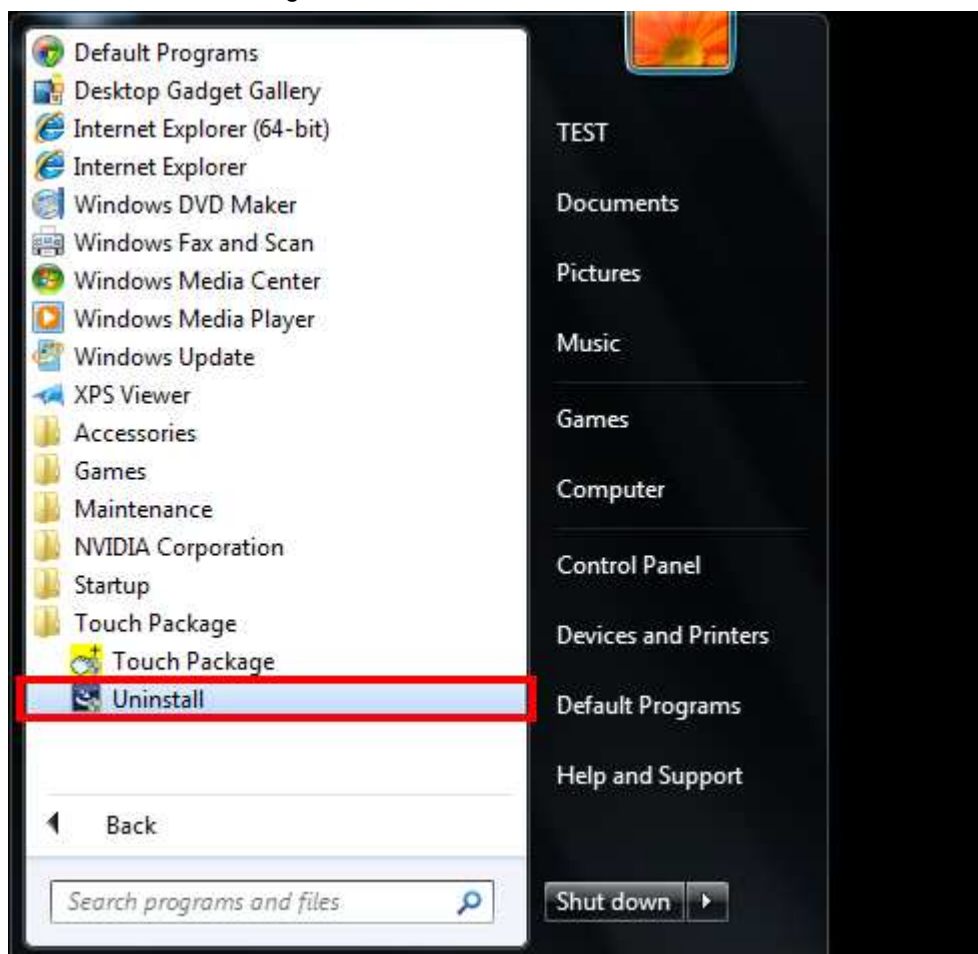


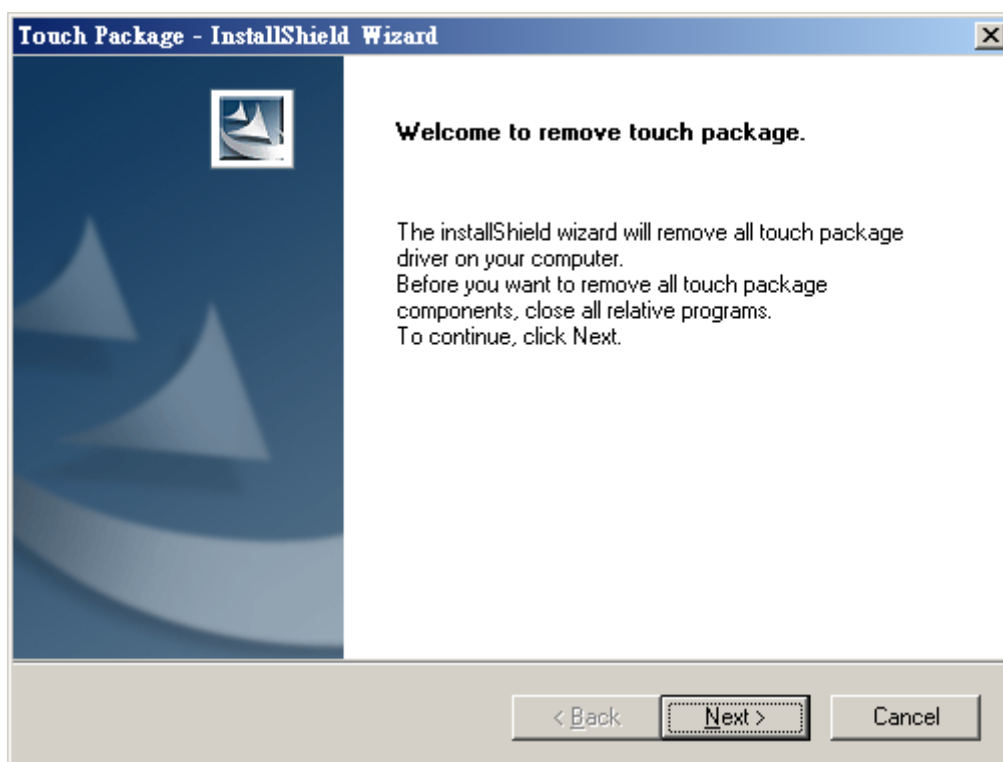
AIM TOUCH USER GUIDE.

Step 3: Go to "C:\Windows\system32\drivers\", select "Tchpkflt.sys" and delete the file.



Step 4: Uninstall Touch Package and reinstall.

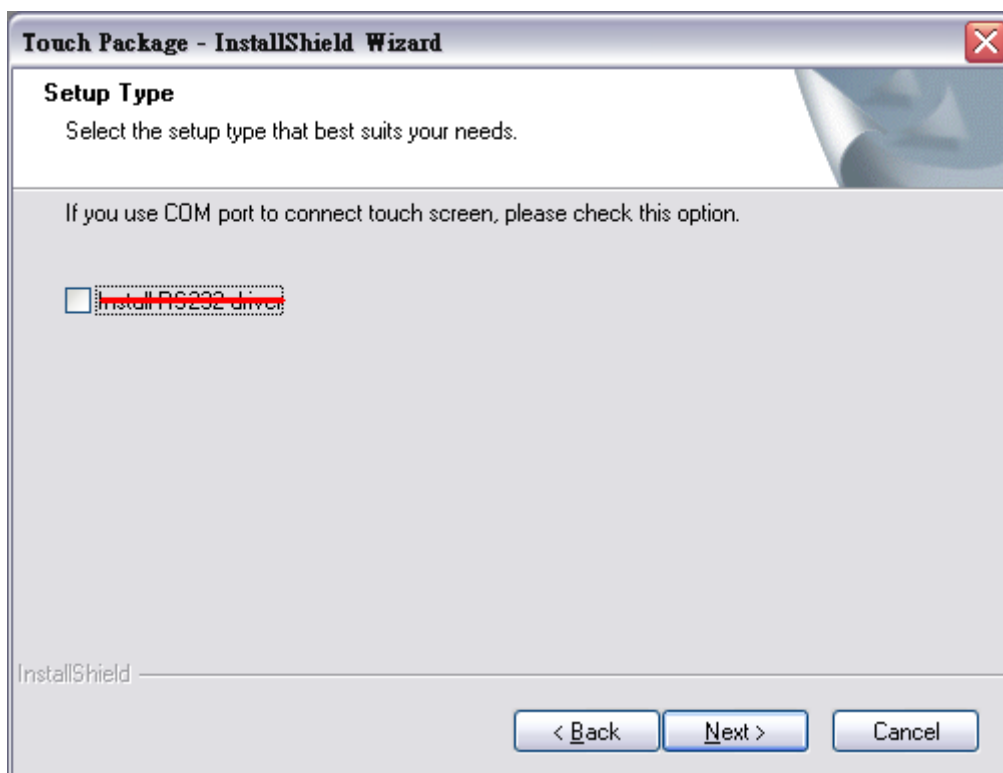




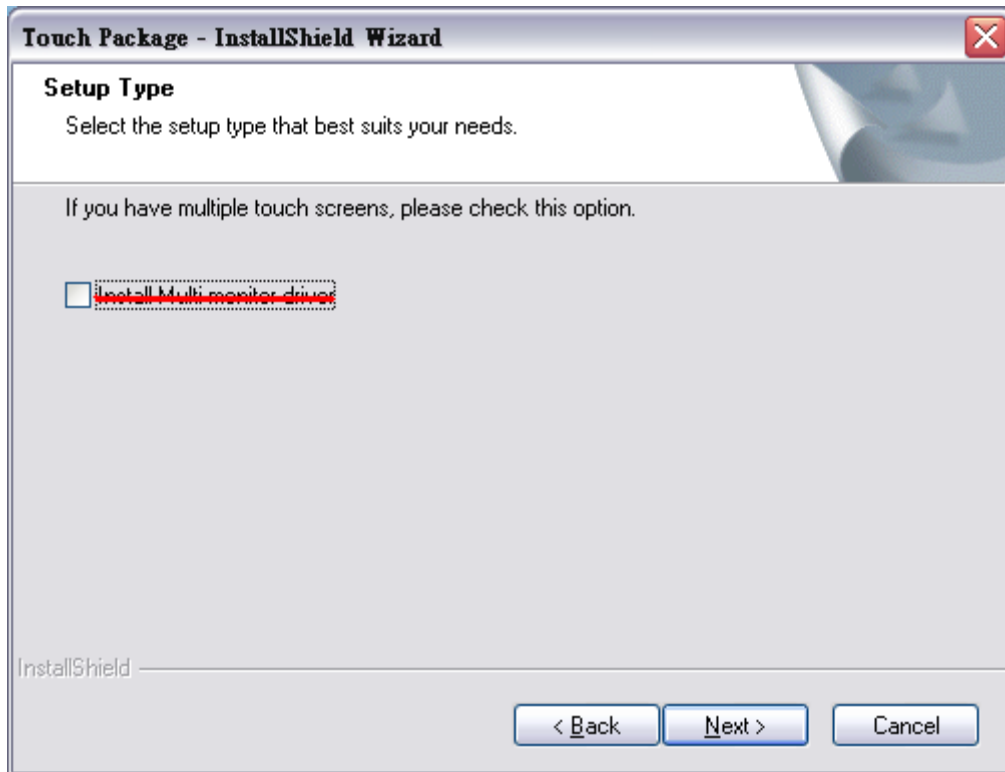
After removal, then can reinstall Touch Package.

During installation **please note the following two points:**

Point 1: Do not select RS232 since the system does not support such interface.



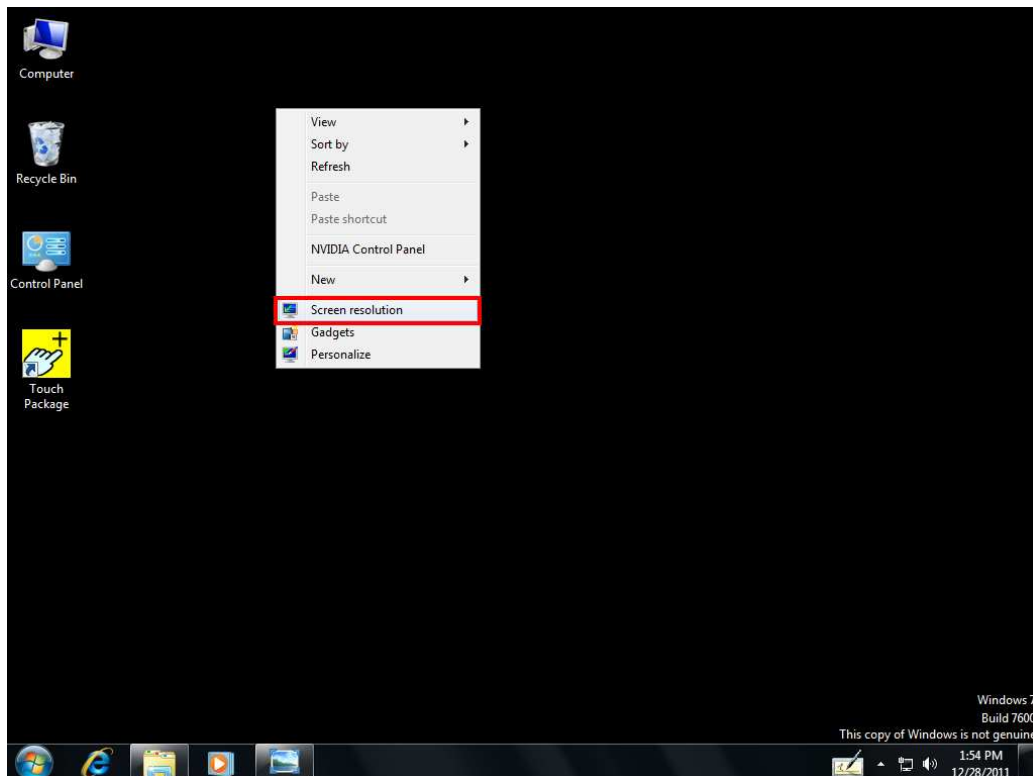
Point 2: Do not select "Multi-monitor".



Completion of the above steps can then proceed to multi-monitor matching.

◆ Detect Display

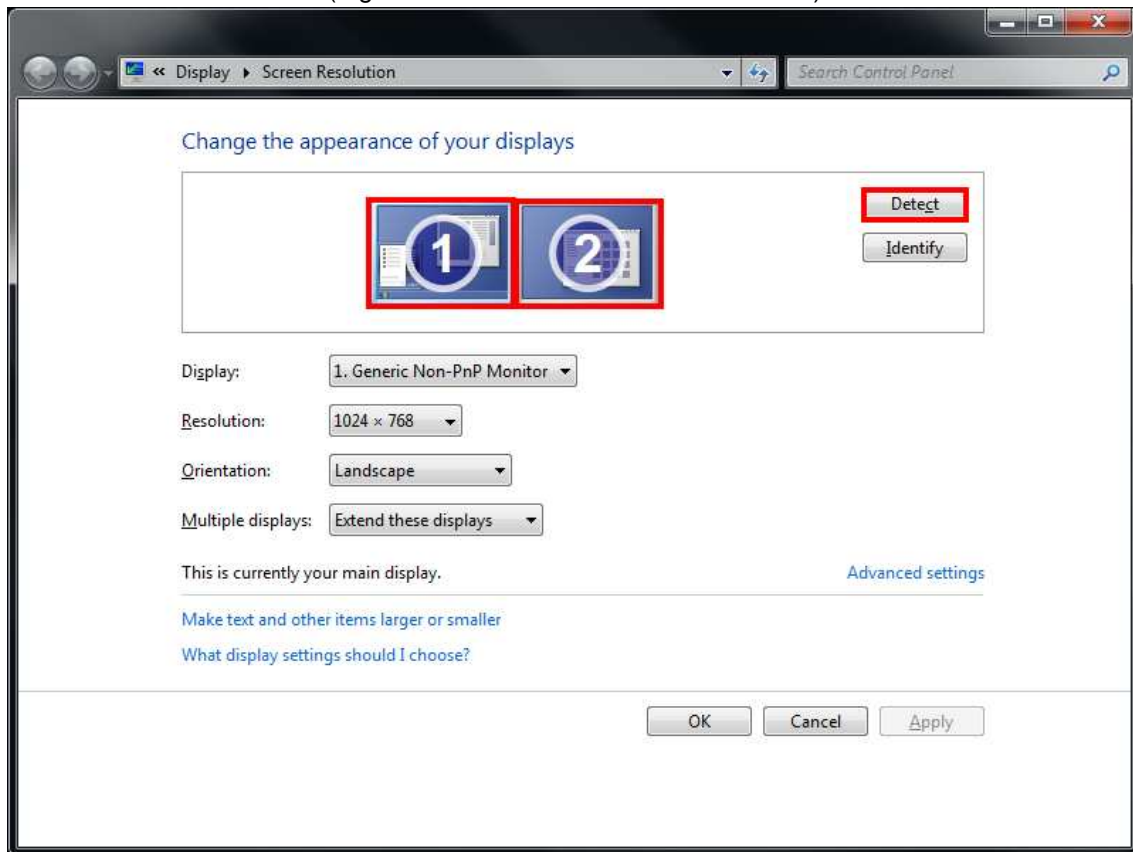
Step 1: after connecting monitor to the computer, use mouse right click and select "Screen Resolution".



AIM TOUCH USER GUIDE.

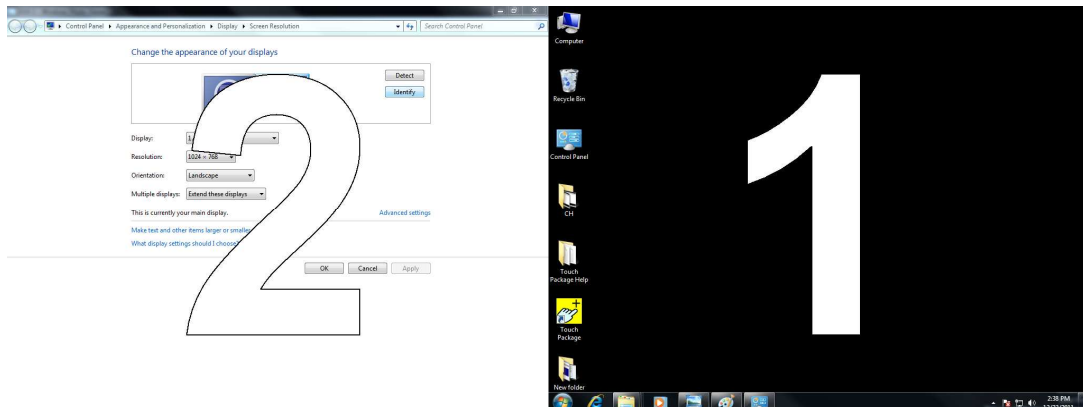
Step 2: click on “Detect” on the upper-right corner to search for connected monitor.

(Figure below shows 2 detected monitors)



After monitor detection, select “Identify.” The monitor will show screen identifier.

(Second monitor shown on the left, first monitor shown on the right.)

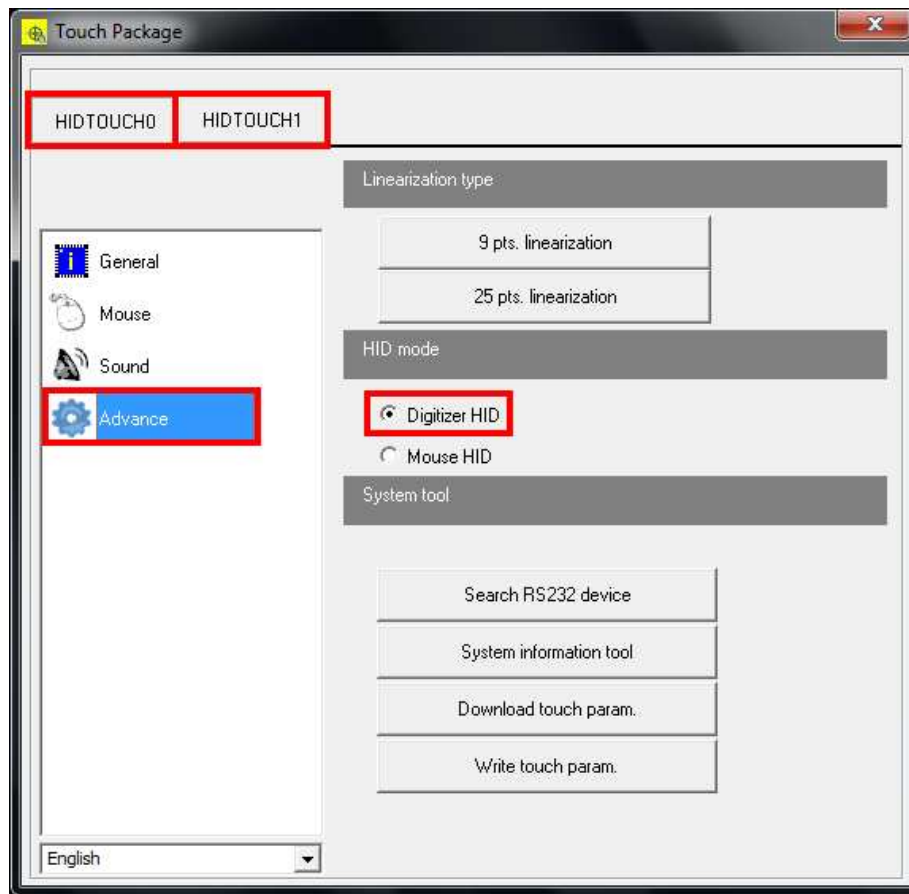


◆ Multimonitor (Digitizer HID Mode)

Step 1: setup all touch devices to Digitizer HID Mode.

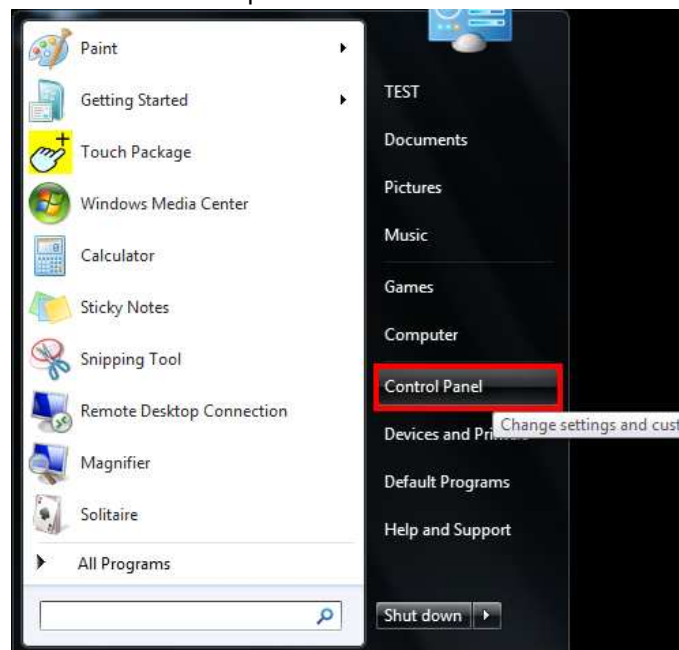
Open Touch Package→Advance→Select Digitizer HID.

(Figure below shows HIDTOUCH0 and HIDTOUCH1 when 2 touch devices are connected)



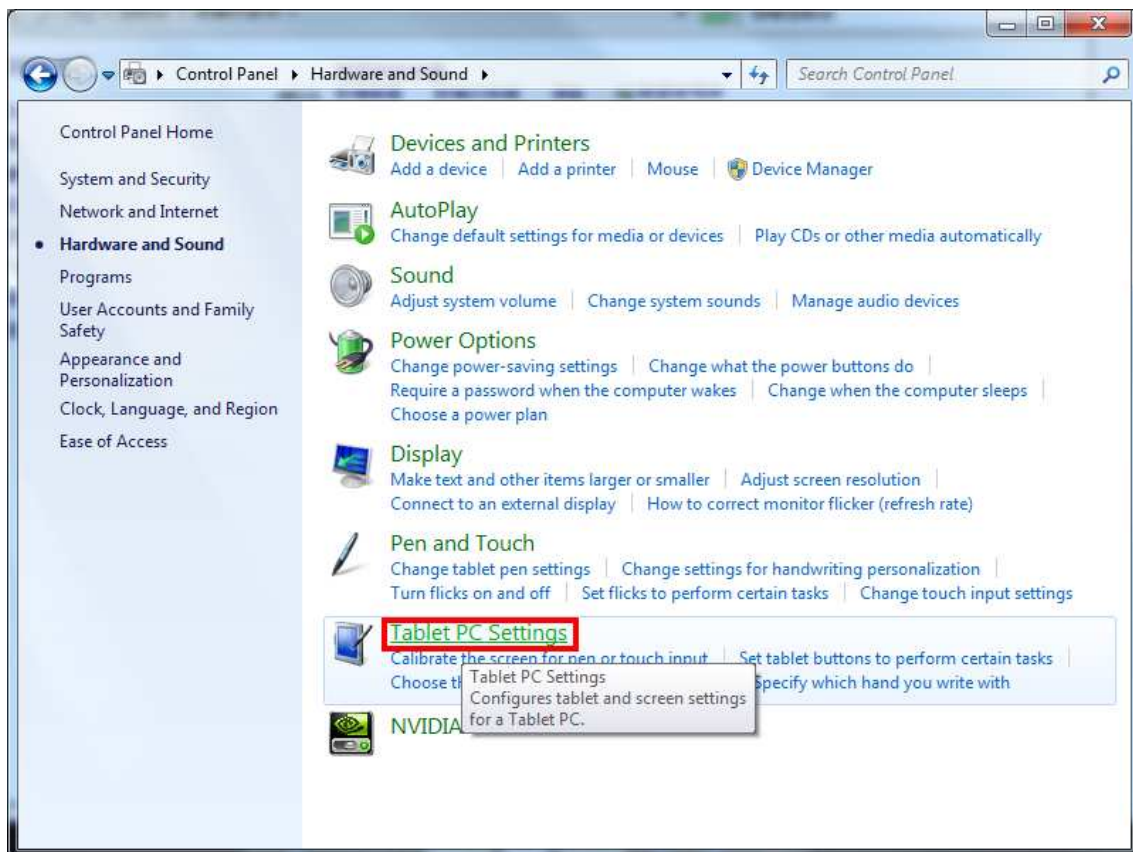
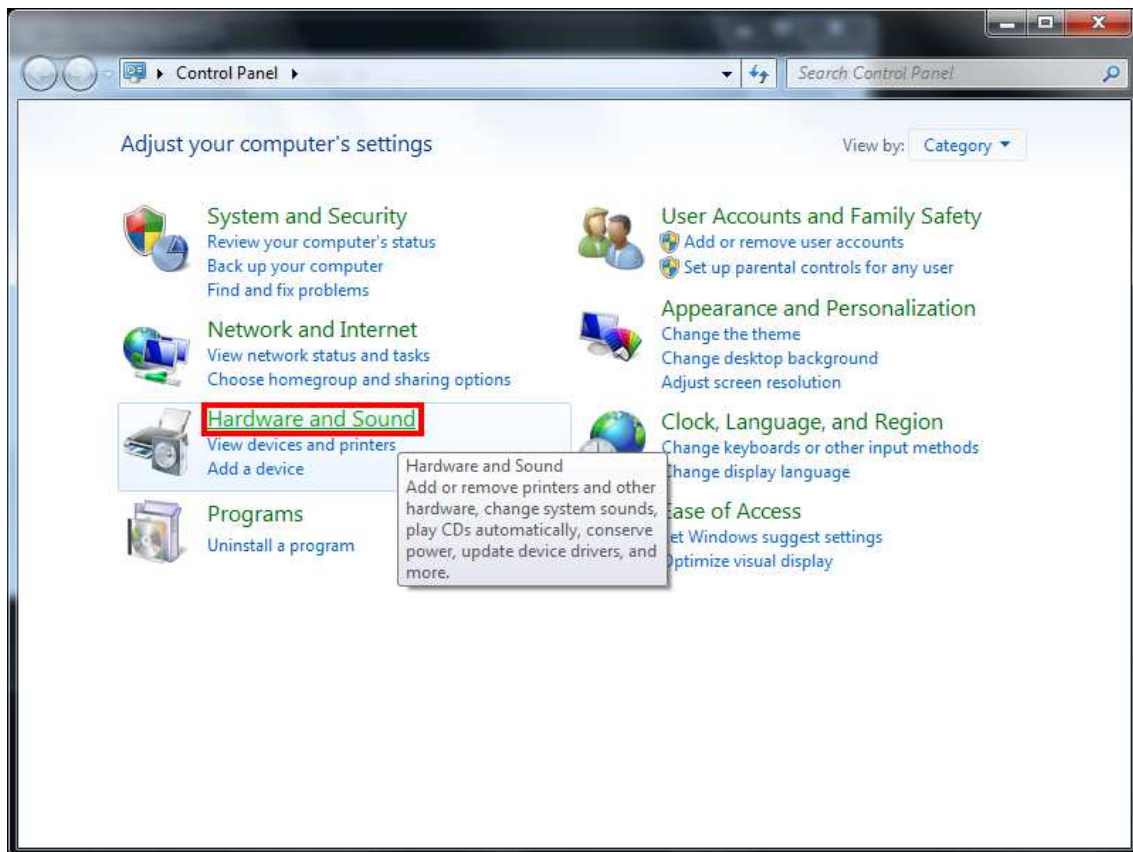
Step 2: Tablet PC setup

Click "Start Menu"→"Control Panel" to open.



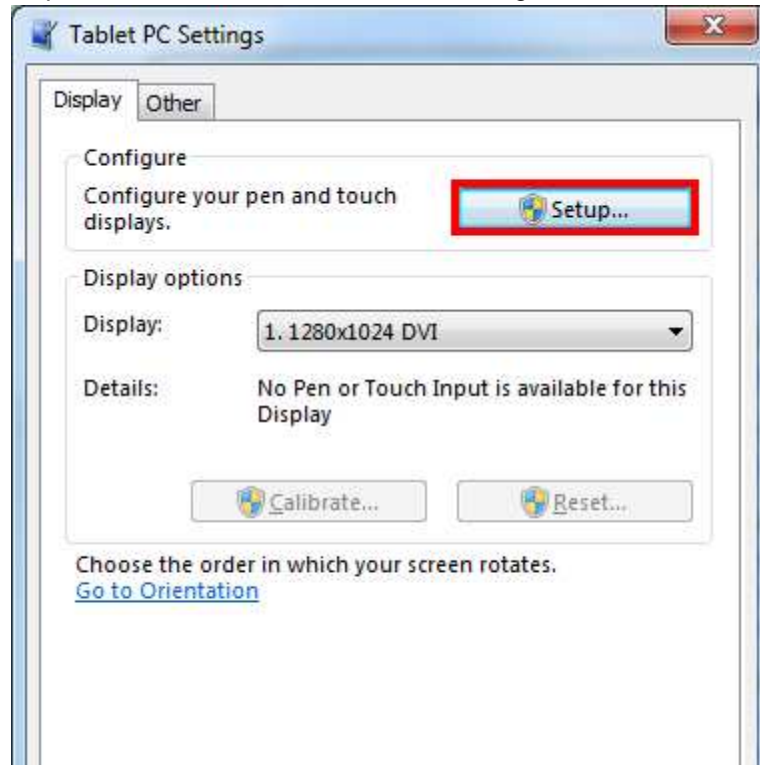
AIM TOUCH USER GUIDE.

Select "Hardware and Sound" → "Tablet PC Settings"



AIM TOUCH USER GUIDE.

Select "Setup" to operate Tablet PC touch monitor matching.



Touch this screen to identify it as the touchscreen.

If this is not the Tablet PC screen, press Enter to move to the next screen. To close the tool, press Esc.

(↑Under this screen, touch the second touch monitor twice.)

Press Enter to proceed to the next step to complete your configuration

(↑Press ENTER on keyboard to confirm match-up)

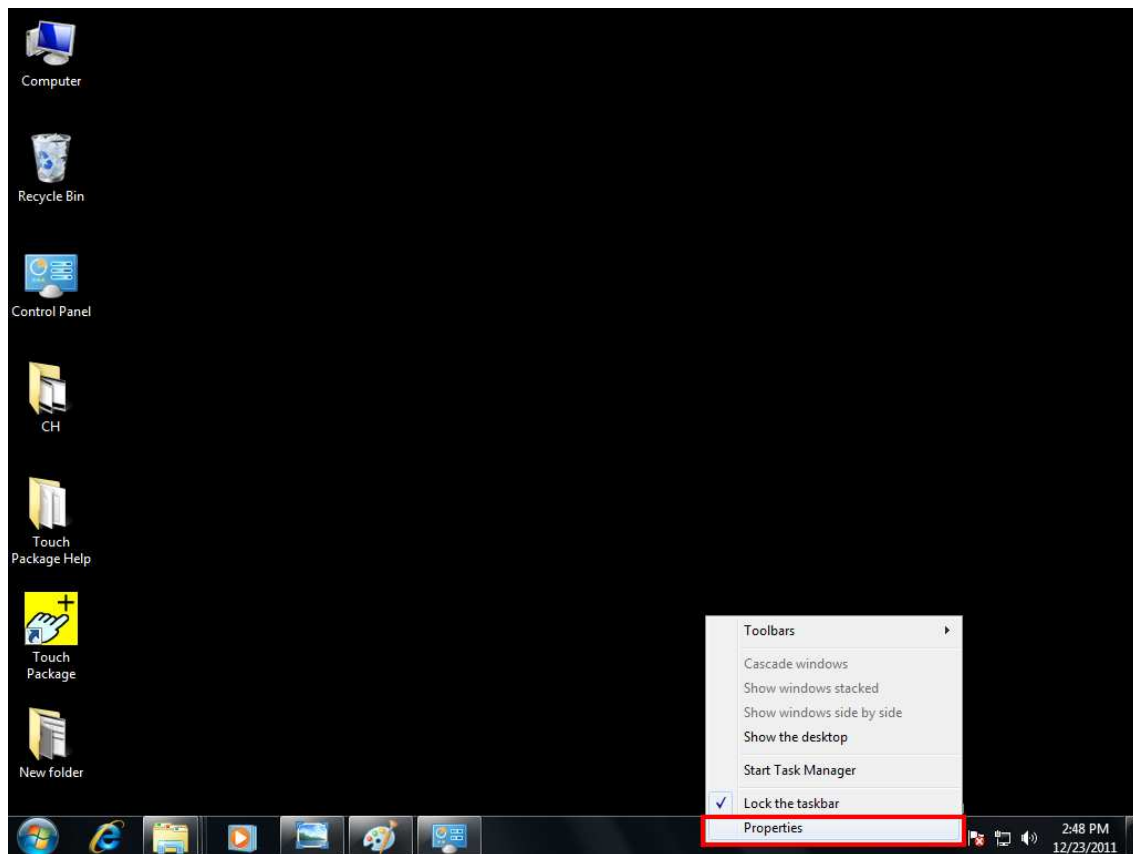
Touch this screen to identify it as the touchscreen.

If this is not the Tablet PC screen, press Enter to move to the next screen. To close the tool, press Esc.

(↑Under this screen, touch the first touch monitor twice, then Press ENTER on keyboard to confirm match-up)

◆ Start Tablet PC Input Panel

Step 1: Right click on Start Toolbar→select “Properties”

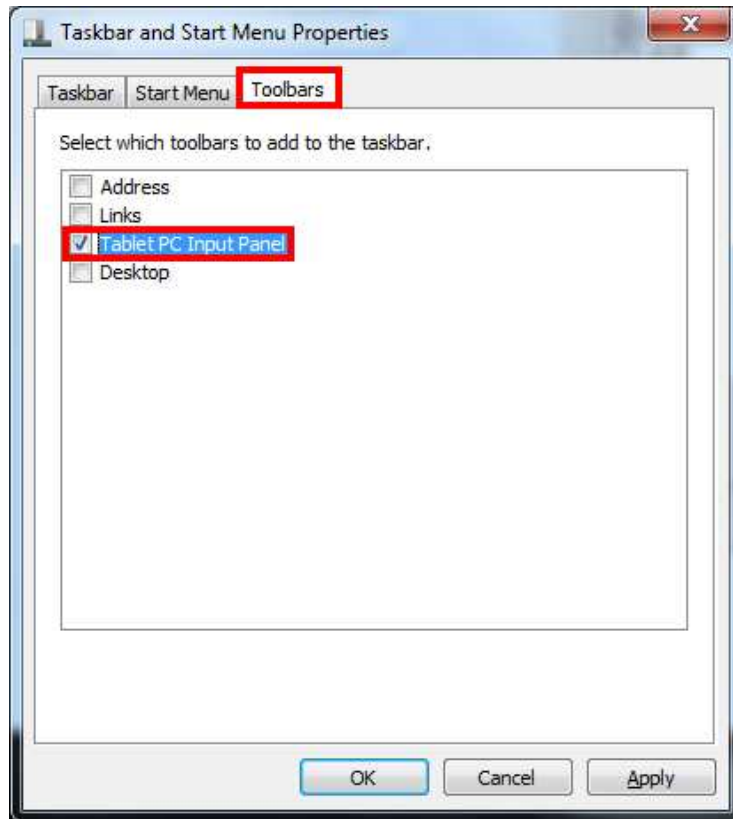


AIM TOUCH USER GUIDE.

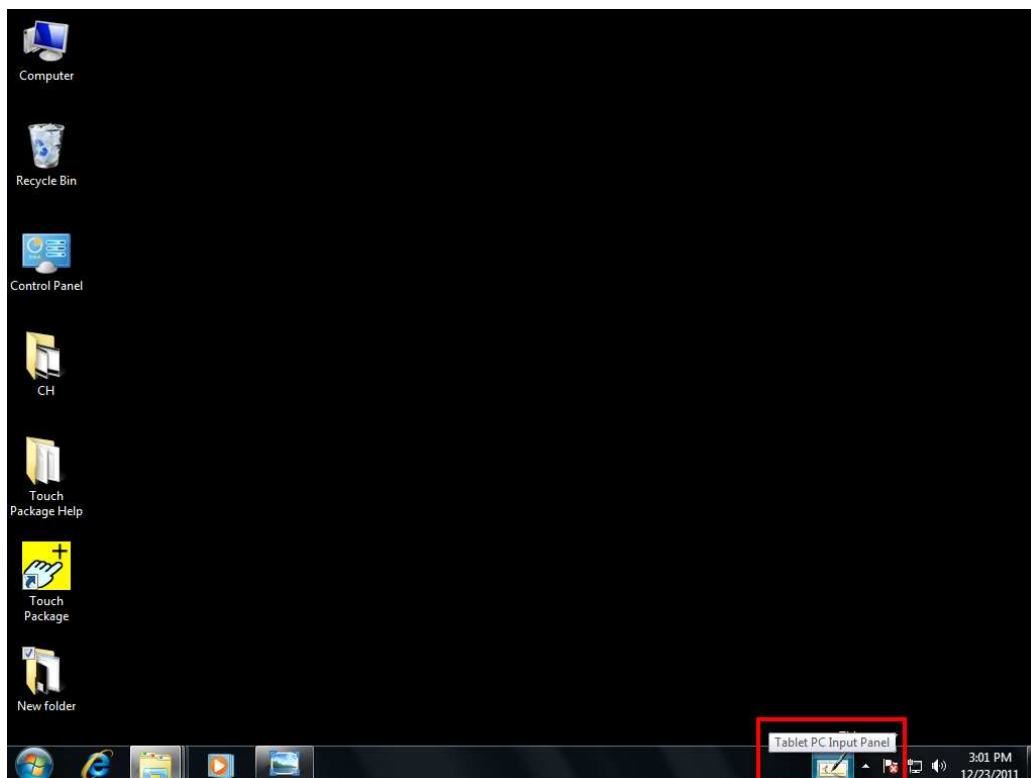
Step 2:

The window below will pop out after select “Properties”.

Click on the “Toolbars” tag, tick “Tablet PC Input Panel” box, click on “Apply” and close the window.



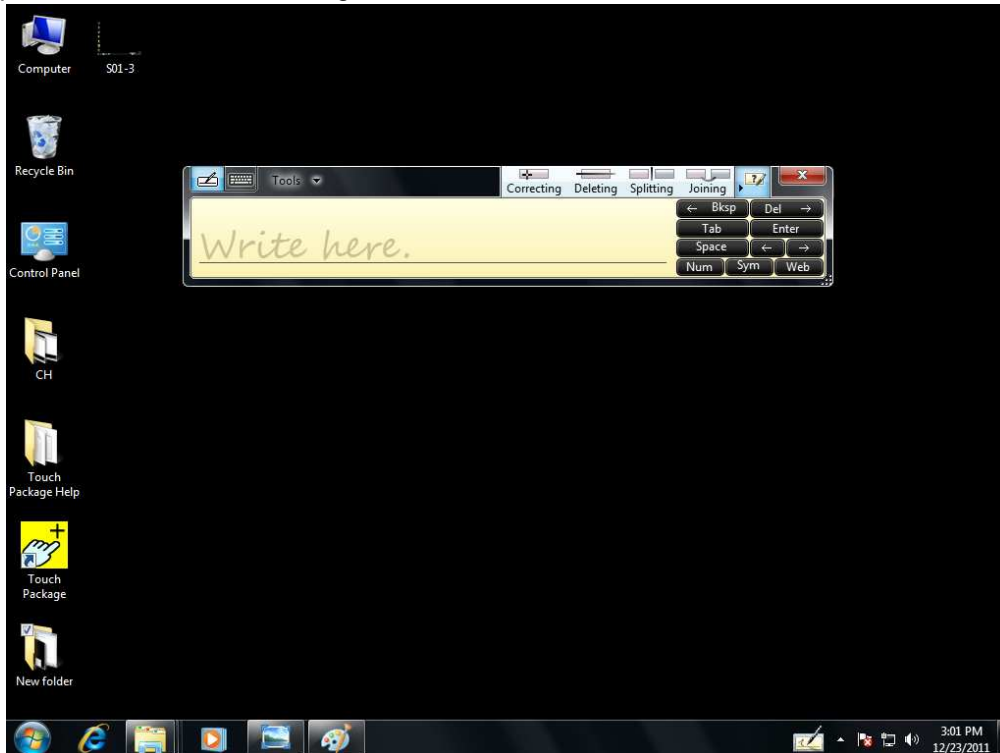
Right side of the Start Toolbar will show “Tablet PC Input Panel” shortcut.



AIM TOUCH USER GUIDE.

Click to start input panel.

This provides user for hand-writing function.



Select "Keyboard" icon on upper-left corner to switch to international keyboard mode.

